



Developing passionate, relevant servants
of Jesus Christ who are shaped by the
entire Scriptures



2023
-2024



WELCOME TO

Millar

College of the Bible

PHIL RUTEN PRESIDENT


Would you like to experience a college setting where you are taught the Bible from cover to cover and how it applies to your daily life? Why not consider how Millar might meet this need? Our vision is to develop passionate, relevant servants of Jesus Christ who are shaped by the entire Scriptures.



Many of your questions about Millar will be answered as you read through this catalogue. However, if you have further questions, please feel free to call our Director of Admissions, **Kelvin Thiessen, at 1-888-89-BIBLE (1-888-892-4253).**

If you would like a first-hand look, we would love to have you come and visit one of our campuses.

TABLE OF CONTENTS

WHO WE ARE	2
STUDENT LIFE	3
ADMISSIONS	5
ACADEMIC INFORMATION	6
ACADEMIC PROGRAMS	7
DOCTRINAL STATEMENT	9
PAMBRUN CAMPUS	10
SUNNYBRAE CAMPUS	24
WINNIPEG CAMPUS	36
GRADUATE PROGRAM	45



The 2023-2024

Catalogue of Millar College of the Bible

This catalogue contains college information that is current as of the date of publication.

Millar reserves the right to make subsequent changes at any time in the policies or programs.

Follow us:


www.facebook.com/millarcollege

[@millarcollege](https://www.instagram.com/millarcollege)

www.youtube.com/user/millarcollege1932

Who We Are

OUR VISION

The vision of Millar College of the Bible is to develop passionate, relevant servants of Jesus Christ who are shaped by the entire Scriptures.

CORE VALUES

We are committed to:

BIBLE TEACHING: the comprehensive teaching of the entire Scriptures.

SERVANTHOOD: developing servants of Jesus Christ through our Integral Model of Education.

FAMILY: cultivating an atmosphere of community where we love, appreciate, and affirm each other.

HOLINESS: nurturing holiness through submission to the Holy Spirit and obedience to God's Word.

MENTORING: intentionally promoting mentoring relationships in our staff and students.

WORLD MISSIONS: the Great Commission of spreading the Gospel of Jesus Christ through local and global missions.

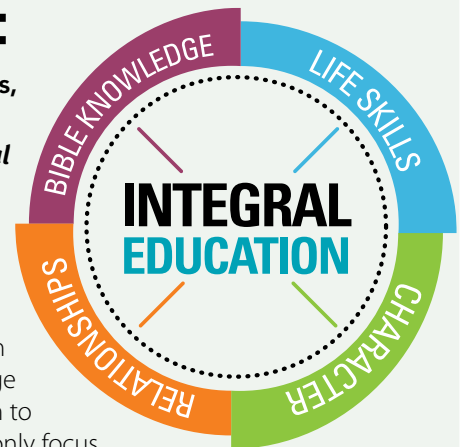
THE LOCAL CHURCH: partnering with and supporting the ministries of the local church.

INTEGRAL EDUCATION

in-'te-grəl :

essential to completeness,
lacking nothing essential

The goal of **Millar's Integral Model of Education** is that the whole student would be moved to deeper maturity in Jesus and that no essentials of development and education would be lacking. Knowledge is critical in Millar's approach to education, but it is not the only focus. Our desire is that our students love Jesus more and serve Him more effectively as their whole lives are impacted because of their time at Millar.



MILLAR'S INTEGRAL MODEL FOCUSES ON FOUR AREAS

- BIBLE KNOWLEDGE
- CHARACTER DEVELOPMENT
- LIFE SKILLS
- RELATIONSHIPS

Student Life

Living in community is a significant aspect of student life, providing a unique education which assists in preparation for life and ministry.



PERSONAL LIFE

Students at Millar agree to conduct themselves according to biblical standards of holiness. Specific guidelines are in place to facilitate healthy community living.

LIFE OF DEVOTION

We strongly encourage students to observe regular quiet times to help develop a closer relationship with God.

MENTORING

Mentoring relationships bring a deeper level of connection to our college community and play a vital role in developing spiritual maturity and personal wholeness. These relationships lend perspective, create accountability, and provide a listening ear.



DAY OF PRAYER

One day each semester is set aside for all members of the student body to spend time in prayer and reflection.

CHAPELS

Three chapel services each week bring the college family together for corporate prayer, praise, sharing, guest speakers, and preaching.

RESIDENCES AND HOUSING

Most students live in student residence and generally share a room with at least one other student. Dorms offer laundry facilities, kitchen facilities, and lounges.

Housing for student families and mature students may be available from the college or within the community.

RECREATION

Each campus has numerous recreational opportunities for students to enjoy. Depending on the campus, students may have access to a gym and weight room, outdoor skating rink, or lakes and mountains. Student lounges also offer different options, such as a coffee and snack bar, ping-pong, foosball, air hockey, or carpetball.

BUILD LASTING RELATIONSHIPS



INTERNET ACCESS

Wireless internet is available on campus.

STUDENT WORK

All Millar students are given a work assignment. These responsibilities create a sense of teamwork and are a valuable part of character development. The average student worker contributes three to four hours of service per week.

STUDENT LEADERSHIP TEAM

The Student Leadership Team plays a significant role in the student body, both spiritually and socially. They also represent student perspectives to the college administration.

DEANS

Deans direct residence and student life. Student leaders work with the Deans to facilitate Christ-centered community living.

FIELD EDUCATION

Students will receive practical ministry experience on campus and in a local church setting during their time at Millar. There are various opportunities to serve, each with an emphasis on using team dynamics to aid in personal growth and effective ministry to others.

The complete Student Handbook is available on our website. Please see millarcollege.ca/current-students.

SHORT-TERM MISSIONS OPPORTUNITIES



As an extension of their on-campus education, students at Millar are given the opportunity to participate in a short-term missions trip, usually overseas.

Experiencing a different culture can be life-changing and helps develop a global perspective of how God is working outside of a student's particular context.

Our commitment is to partner with evangelical missions who share our vision for reaching the world with the Gospel of Jesus Christ.

MISSIONS

ADMISSIONS



APPLICATION REQUIREMENTS

AGE

You must be at least 18 years of age by December 31 of your freshman year.

EDUCATION

The educational requirement for acceptance at Millar is a Grade 12 high school diploma. Students who are 20 years or older and do not have a high school diploma must provide a successful GED examination result in order to qualify for entrance. Applicants who are home study students and have not received an official diploma must produce an official transcript or its equivalent (see 1.d. below), indicating the successful completion of a high school education.

CHRISTIAN CHARACTER

- You must know the Lord Jesus Christ as your personal Saviour.
- Your general lifestyle must give evidence of your faith in Christ.
- You will need to submit to the guidelines and regulations established by the college.

APPLICATION PROCEDURE

Application Forms and Reference Forms can be completed and submitted online by going to www.millarcollege.ca/apply.

1. Include with Application Form:
 - a. a non-refundable application fee of \$50. Payment can be made by cheque payable to **Millar College of the Bible**, PayPal, or e-Transfer sent to finance@millarcollege.ca.
 - b. a recent head-and-shoulders colour photograph of yourself.
 - c. a 300-400 word summary of your conversion and Christian growth, family life, present occupation, and expectations and goals for your educational experience at Millar.
 - d. your most recent transcript(s) (high school or college) or a home study portfolio, which includes:
 - an English paper **or** History project **or** Social Studies project.
 - a Mathematics **or** Science examination.
2. Have suitable individuals complete Reference Forms:
 - a. one reference from your pastor, youth pastor, or Christian leader who is not a relative.
 - b. one reference from an adult Christian friend who is not a relative, is 21 years of age or older, and is not a current student.

INTERNATIONAL STUDENTS

Please visit millarcollege.ca/apply for the current status of our ability to host international students at our campuses.



ACADEMIC INFORMATION

A credit hour represents one class period of 50-70 minutes each week for one semester. A regular course load is 16 credit hours per semester.

CLASSIFICATION OF STUDENTS

Students are officially classified according to the number of credit hours they have earned:

First Year	0-31 credit hours
Second Year	32-63 credit hours
Third Year	64-95 credit hours
Fourth Year	96 or more credit hours

GRADING SYSTEM

GRADE POINT AVERAGE (GPA)

GPA is determined by dividing the grade points earned by the number of credit hours taken. Normally, students earning a GPA lower than 1.5 in their core subjects over the course of any school semester will not be permitted to return for the following semester.

GRADUATION HONOURS

Three groups of honour students are recognized at graduation. Those graduating Summa Cum Laude (Highest Honours) must achieve an accumulated GPA of at least 3.80; Magna Cum Laude (High Honours), 3.65; Cum Laude (Honours), 3.50.

COLLEGE CREDITS

ACADEMIC CREDITS

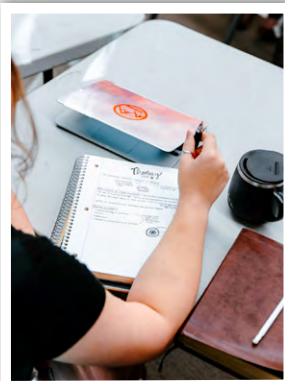
These credits are earned through the regular classroom courses of study and are the primary component of our academic programs. Academic credits may also be earned in areas such as sports, choir, instrumental ensemble, and Outdoor Edge.

MODULAR COURSES

Courses given in a one-week module format give students more elective choices and an opportunity to learn from a wide range of adjunct instructors. Each semester includes one mandatory modular course.

GRADE	% RANGE	PTS	EVALUATION
A	95-100	4.0	Exceptional Work
A-	90-94	3.75	
B	85-89	3.5	
B-	80-84	3.0	Competent Work
C	75-79	2.5	
C-	70-74	2.0	
D	65-69	1.5	
D-	60-64	1.0	
E	55-59	0.5	Failing Grade
F	Below 55	0.0	

ACADEMIC PROGRAMS



BACHELOR OF BIBLICAL STUDIES

THREE YEARS

The Bachelor of Biblical Studies program provides students with the background and skills necessary to effectively minister in a broad area of Christian outreach. The focus is on the detailed study of Scripture, theology, and ministry development.

OBJECTIVES

Bible Knowledge

Students will build a solid foundation of biblical and theological understanding through their core courses, designed to cover all 66 books of the Bible over three years of study. Elective courses provide opportunity for students to explore more specialized areas of study.

Life Skills

Students will be challenged to grow in their ability to speak and express themselves in public, as well as their ability to apply biblical knowledge and theology in ministry contexts.

Character

Students will be encouraged to grow in discipline and life management through exploring truths and principles related to personal spiritual growth.

Relationships

Students will learn how to work with others and develop in areas of spiritual leadership, as well as develop a broader understanding of God's plan for ministry around the world.

REQUIREMENTS

To receive the Bachelor of Biblical Studies degree, a student must:

- display evidence of developing Christian character by reflecting a sense of maturity and responsibility in their personal and social life.
- be actively involved in Field Education each semester.
- successfully complete one evangelism, one missions, one homiletics, and one teaching elective during their years of study.
- successfully complete a comprehensive examination.
- complete 96 credit hours and achieve an AGPA of 2.5 or higher.
- settle any outstanding financial obligations with the college. Transcripts, degrees, etc. will be withheld until all accounts are paid.

CHRISTIAN MINISTRY CERTIFICATE

ONE YEAR

Students who successfully complete the first year of the program with a minimum of 32 credits and an AGPA of 1.5 or higher will receive a Christian Ministry Certificate.

CHRISTIAN MINISTRY DIPLOMA

TWO YEARS

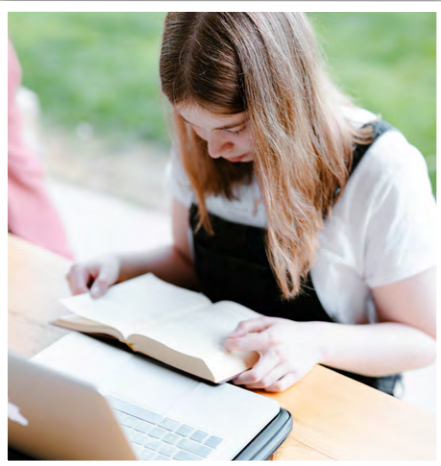
Students who successfully complete two years of the program with a minimum of 64 credits and an AGPA of 2.0 or higher will receive a Christian Ministry Diploma.



4TH YEAR INTERNSHIP PROGRAM

The fourth-year internship is an additional academic year of supervised ministry with seven week-long module classes of formal instruction. Opportunities for ministry are diverse; internships may be completed in churches and parachurch organizations in roles such as assistant pastors, youth pastors, camp directors, missionaries, assistant deans, or counsellors. Applications to the fourth-year internship program must be approved by the college Education Team.

**STUDENTS WHO COMPLETE THEIR FOURTH-YEAR INTERNSHIP
WILL UPGRADE THEIR THREE-YEAR DEGREE TO A
BACHELOR OF ARTS IN BIBLICAL STUDIES.**



REQUIREMENTS

To receive a Bachelor of Arts in Biblical Studies, a student must:

- complete 14 fourth-year academic credits and 18 internship credits in a specific ministry role.
- have a total of at least 128 credit hours after all four years of study and achieve an AGPA of 2.5 or higher.



DOCTRINAL STATEMENT

We believe...



The Old and New Testaments are God's written revelation to man, fully inspired by the Spirit of God to the very words penned by the human authors (2 Pet. 1:20-21; 3:14-16).

God is the one infinite eternal Spirit (Exod. 3:14; Deut. 6:4, 5, 13; Isa. 44:6; Jer. 10:10; Jn. 4:24) who has revealed Himself through the Scriptures in three Persons – the Father, Son, and Holy Spirit (Matt. 3:16-17; 2 Cor. 13:14). The LORD is the Holy One who lacks nothing in power, wisdom, and love (Isa. 40:25-31; Rev. 4:8). God is the Creator of the heavens and the earth and all that dwells in them (Gen. 2:1-3; Acts 17:24-29; Rev. 4:11).

The Lord Jesus Christ is the eternal Son of God (Jn. 1:1-2, 32-34; 8:58; Heb. 1:8; 1 Jn. 1:1-2), who became incarnate without sin, born of the virgin Mary through the Holy Spirit (Isa. 7:14; 9:6-7; Matt. 1:20-21; Lk. 1:35; Jn. 1:14a; 1 Jn. 3:5). Jesus Christ is true God and true man, the exact representation of God's being (Jn. 1:14b; Col. 1:15; 2:9; Heb. 1:1-3). He died on the cross, was buried, and three days later was raised from the dead (Acts 2:23-24, 31-32; 1 Cor. 15:3-4), ascended to heaven and is now seated at the right hand of the Father (Acts 2:33-36). He is the Head of the Church (Col. 1:18; 2:19) and ministers as our High Priest and Advocate (Heb. 4:14-15; 1 Jn. 2:2).

The Second Coming of Christ will be personal, bodily, visible, and triumphant (Matt. 24:30-31; Acts 1:8-11; 1 Thess. 4:13-18; Tit. 2:13). No one but the Father knows the time of His Coming (Mk. 13:32). Christ will establish the throne of David upon the earth and reign in righteousness for one thousand years (2 Sam. 7:16; Isa. 9:6-7; 61:1-5; 63:1-6; 65:1-25; Zech. 14:3-9; Lk. 1:32-33; Acts 3:17-23; Rev. 20:1-6).

Man was created in the image and likeness of God (Gen. 1:25-27; James 3:9). Man was created from the dust of the ground on the sixth day of creation apart from any process of death (Gen. 1:27, 31; 2:7). On the same day woman was taken from the side of man to become fellow-heir of life (Gen. 2:21-23). Through Adam's disobedience man became dead in trespasses and sins, born with a corrupt nature and is incapable of turning to God for salvation apart from God's grace (Gen. 3:19; Jn. 6:65; Rom. 3:10-11; 5:12-21; Eph. 2:1-2).

The Substitutionary Atonement of Christ is the only means of redemption, for apart from the shed blood of Jesus there is no salvation (Lev. 17:11; Isa. 53:4-6; Rom. 3:25; 1 Cor. 1:30-31; Eph. 1:7; Heb. 10:10; 1 Pet. 1:18-19; 2:24; Rev. 5:9-10).

Justification by Grace through Faith in the death and resurrection of Christ is the only means of salvation (Matt. 1:21; Acts 4:12). Sinners are not saved through any of their own merit or works, but good works are an evidence of salvation (Gal. 3:11-14; Eph. 2:4-10; Phil. 2:12-13; Tit. 3:4-7). Christ who knew no sin became sin so that those who believe in Him may be declared righteous by the Father (Rom. 3:21-24; 2 Cor. 5:21). Those who have been justified by grace through faith are eternally secure in Christ (Jn. 5:24; 10:28-30), since they have been given the seal of the Holy Spirit to guarantee their day of redemption (Eph. 1:13-14).

The Church is composed of all who are united by the Holy Spirit with Christ (Acts 2:1-13; 1 Cor. 12:27-31; Eph. 2:14-22).

Making Disciples through the proclamation and the living out of the gospel of Christ is the mission of the church (Matt. 28:18-20). Since all are lost apart from faith in Christ, it is urgent that believers be committed to give witness of Christ's love to all the nations (Isa. 49:6; Acts 1:8; Rom. 1:18-20; Col. 1:24-29).

The Resurrection of Christ is bodily and gives witness to the future resurrection (Matt. 28:1-10; 1 Cor. 15:1-11). The first resurrection is unto life eternal for all those who believe in Him (Job 19:26; 1 Cor. 15:12-23; Rev. 20:4-6). The second resurrection, one thousand years later, is for all who died in their sins unto condemnation (Rev. 20:4-6).

The full 15-point doctrinal statement is available at
www.millarcollege.ca/values

BOARD OF DIRECTORS

AS OF 2022

Gerald Andres
Airdrie, AB

Ken Beasley
Vancouver, BC

Howard Bredin
Oakbank, MB

Rob Cochrane
Swift Current, SK

Joel Doerksen
MacGregor, MB

Patrick Laybolt
Swift Current, SK

Matthew Martens
Black Diamond, AB

Charles Schmidt
Davidson, SK

Kevin Sorenson
Killam, AB

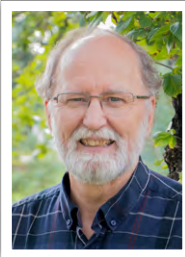
Frank Unger
Hague, SK

Don Wiebe
MacGregor, MB

WELCOME TO MILLAR
COLLEGE OF THE BIBLE



ARNIE ARMSTRONG
DEAN OF EDUCATION



Thanks for taking time to look through our catalogue. The purpose of Millar College of the Bible is the same at each of our campuses – to develop passionate, relevant servants of Jesus Christ who are shaped by the entire Scriptures.

Located in southern Saskatchewan, Millar Pambrun is a beautifully treed campus with two sports fields, a gymnasium, and an excellent library. If you want the opportunity to study the Bible in a more secluded setting with approximately 160 other students, then our Pambrun Campus may be for you!

www.millarcollege.ca/pambrun

TABLE OF
CONTENTS

ACADEMIC CALENDAR	11
ATHLETICS	12
FINE ARTS	13
FINANCIAL INFORMATION	14
FINANCIAL ASSISTANCE	15
CORE COURSE SCHEDULE	16
COURSE DESCRIPTIONS	17
PERSONNEL	22

ACADEMIC CALENDAR

2023 - 2024



FALL SEMESTER 2023

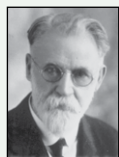
Upperclassmen Arrive	Sept. 7
Freshmen Arrive	Sept. 8
Registration	Sept. 8 - 9
Opening Sunday	Sept. 10
First Day of Classes	Sept. 11
Youth Edge	Oct. 20 - 22
Semester Break	Oct. 23 - 29
Modular Courses	Oct. 30 - Nov. 3
Final Exams	Dec. 18 - 20
Christmas Holidays	Dec. 21 - Jan. 6*

WINTER SEMESTER 2024

Arrive Back on Campus	Jan. 6*
Opening Sunday	Jan. 7
First Day of Classes	Jan. 8
Modular Courses	Jan. 8 - 12
Missions Conference	Jan. 19 - 21
Semester Break	Feb. 17 - 25
Classes Resume	Feb. 26
Final Exams	TBD
Commencement Weekend	TBD

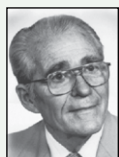
*Please note that this is a Saturday.

Millar's History



W. J. Millar
1856-1933

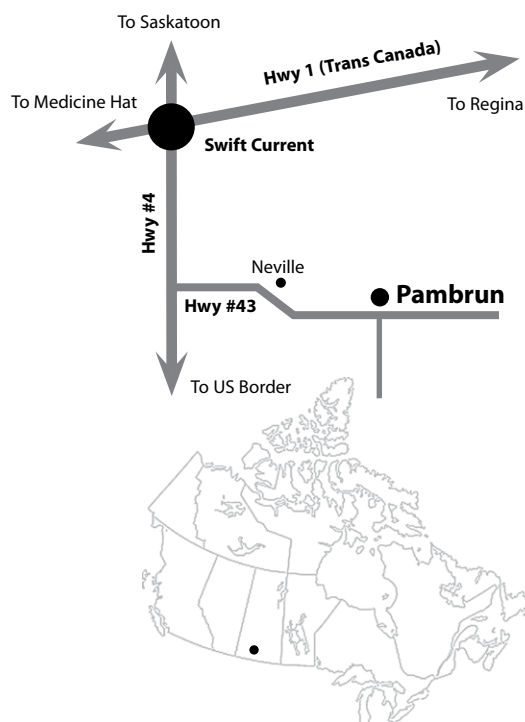
While preaching in Scotland, D. L. Moody led William J. Millar to Christ. Mr. Millar came to Canada to preach and was invited to begin Bible classes in Moose Jaw, SK. In 1932, the school moved to Pambrun, SK, and Herbert W. Peeler was asked to help with the teaching. In January of 1933, Reverend Millar passed away, leaving Mr. Peeler to guide the school. By God's grace, Mr. Peeler directed the college for over fifty vital years of ministry.



H. W. Peeler
1910-2005

Millar College still exists to teach the Bible. Thousands of young men and women have studied the Bible at Millar and gone on to have vibrant ministries around the world as missionaries, pastors, youth leaders, and lay workers. God has faithfully provided for and blessed the work of Millar College of the Bible.

Do not make final travel plans without consulting the college first. These dates are subject to change.



ATHLETICS

EDGE VARSITY TEAMS

- Basketball
- Futsal
- Hockey
- Volleyball

Teams play in the Prairie Athletic Conference (PAC) and locally in men's and women's leagues.



CAMPUS RECREATION

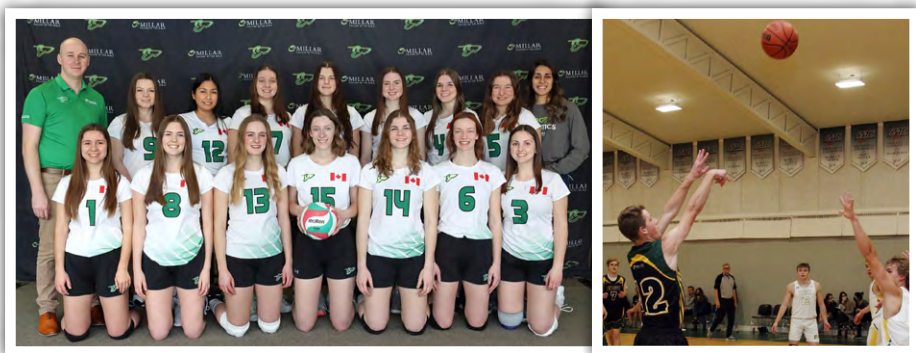
Students have the opportunity to compete in the campus recreation program in their assigned houses.

Sports include:

- Dodgeball
- Floor Hockey
- Handball
- Kickball
- Soccer
- Ultimate Frisbee

Other venues and opportunities for students to stay active and enjoy physical fitness include:

- Gymnasium
- Outdoor Skating Rink
- Weight Room



Courses & Opportunities

NATIONAL COACHING CERTIFICATION PROGRAM

Millar athletes have the opportunity to work towards becoming a certified coach with NCCP. A coaching theory and technical course, along with practical experience, enables students to achieve their Introduction to Coaching Level.

OUTREACH

- Edge Sports Camps
- Elevate Sports Ministry
- Sporting Events
- Sports Missions Trip: Opportunities are available to participate in an athletics missions outreach alongside the Effective Sports Evangelism course. Trips alternate each year between local and abroad.

These events, hosted by Millar, provide opportunities for students to use their athletic skills in practical areas of ministry.

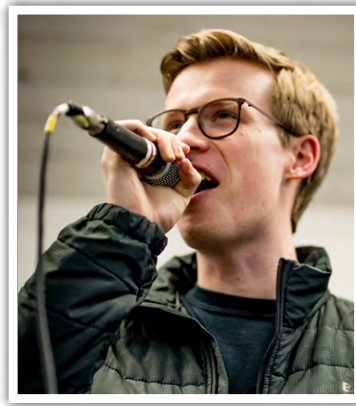




For centuries, Christians have used music and drama to worship God and present the gospel to the world. At Millar, there are many ways for worship leaders, actors, and musicians to develop these skills. Through practical instruction and classroom-based teaching, students are equipped to serve the church in biblical worship and challenged to grow in all areas of life.

The Fine Arts program at Millar strives to:

- equip students with life skills, training them to use every talent as a tool for ministry.
- build character through every practice and performance.
- apply biblical truths while using the arts to serve.
- challenge students to grow in relationships through team dynamics and leadership opportunities.



PERFORMANCE GROUPS

- Chapel Worship Teams
- College Choir
- Descendent (Drama Team)
- Instrumental Ensemble
- Replica (Traveling Worship Team)

CLASSROOM

In addition to practical performing groups, there are opportunities for classroom instruction in worship, music, and drama. Worship courses offer teaching in worship theology, worship history, worship leadership, and technologies used in modern worship. Drama courses give students the opportunity to establish the fundamentals of acting, develop their directing and playwriting abilities, learn about improvisation, and apply the skills they are learning through practical ministry opportunities.

Private music lessons are also available to students who want to focus on learning a specific instrument.

NEW STUDENT APPLICATION FEE (NON-REFUNDABLE)

50

COST OF TUITION, ROOM & BOARD (PAYMENT DUE UPON ARRIVAL EACH SEMESTER)

Student fees cover the majority of a student's cost to attend Millar, but a significant amount is graciously provided by donations from alumni and friends of the college. Students are normally expected to enroll in a full course load. Single students are expected to live in dorms, although exceptions may be made for mature students. Rental housing is available for student families and mature students.

DORM STUDENTS

Tuition (per semester)	3,825
Room and Board (per semester)	3,200
Tuition, Room & Board (full year)	14,050
Security Deposit (one-time, refundable)	200
Textbooks (estimate, per semester)	400

NON-DORM STUDENTS (FAMILIES AND MATURE STUDENTS)

Tuition (per semester)	3,825
Note: Spouses of full-time students receive 33% discount	
Textbooks (estimate, per semester)	400
Meal Plan (per semester, optional)	1,725
Rent (per month): typically ranges from \$500 to \$700 (utilities not included)	
Security Deposit (one-time, refundable)	one month's rent

FOURTH YEAR INTERNS

Tuition (\$478 per module x 7 modules)	3,346
Internship Fee (\$2,152 per semester x 2 semesters)	4,304
Room and Board (\$160 per module x 7 modules)	1,120
Tuition, Room & Board (full year)	8,770
Textbooks (estimate, per semester)	100

OTHER FEES

Music Fees (12 lessons per semester)	
1/2 hour	280
1 hour	560
Audit Rate (per credit hour)	120
Note: Spouses of full-time students may audit up to 5 credits per semester at no charge	
Special Menu (per month) up to	100
Exam Rescheduling Fee (per exam)	100
Third-Year Graduation Fee	150
Fourth-Year Graduation Fee	175
Athletics Fee	350
Plus each additional sport	100
Vehicle Parking (per semester)	
Without plug-in	10
With plug-in	50
Mini Fridge Electrical Fee (per semester)	15

CASH DISCOUNT

A discount on tuition and room and board will be given if fees are paid in full at registration by cheque, debit, e-transfer, or cash. The discount for students in first, second, or third year is \$100 per semester, and the discount for students in fourth year is \$50 per semester.

LATE PAYMENT OF FEES

All fees are due on registration day. Semester fees not paid in full by noon on the last business day of the opening month will be assessed a finance fee of \$25. Additionally, a monthly overdue charge of 1% of the unpaid balance will be assessed on the last business day of each month thereafter.

REFUND POLICY

Refunds are made at the discretion of the college. In most cases, any student who withdraws before the end of the semester will forfeit tuition for the semester and room and board fees for the month in which the student leaves campus. In cases where sickness is a factor and a student leaves for four weeks or more, the student may apply for a pro-rated refund.

Financial Assistance

CHRISTIAN WORKERS BURSARY

A bursary for 10% of tuition will be awarded to students whose parents are engaged in full-time Christian ministry (missionaries, pastors, evangelists, camp staff, and other parachurch organizations). To apply, complete the section on the application form.

HERBERT W. PEELER MEMORIAL BURSARY

Two annual entrance bursaries of \$1,000 are awarded to first-year students based on financial need. Students must apply before June 1 to be eligible. Application form available online at www.millarcollege.ca/apply.

KARSGAARD BURSARY

Eight entrance bursaries of \$1,000 are available annually to first-year students based on financial need. Students must apply before June 1 to be eligible. Application form available online at www.millarcollege.ca/apply.

RECRUITMENT BURSARY

A \$250 bursary (\$125 per semester for one academic year) will be awarded to each student who personally recruits a new freshman student. The applicant must indicate this student on his/her application form.

SASKATCHEWAN ADVANTAGE SCHOLARSHIP

A scholarship of \$750 per year for up to four years is available from the Government of Saskatchewan to eligible students who graduated from a SK high school in 2012 and later. Students will be assessed for the scholarship by applying for student loans and grants.

STUDENT AID FUND

As funds are available, students are selected for Student Aid according to financial need and good standing at Millar. Applications are available at the Business Office.

WILLIAM WIGGINS MEMORIAL BURSARY

This \$400 bursary is presented to a Millar student who intends to pursue cooking as a ministry. Applicants must have applied to a culinary arts program in an accredited school and submit a written essay to the Wiggins family describing their interest in ministering through the culinary arts.

YOUTH & CHILDREN'S MINISTRY ACHIEVEMENT SCHOLARSHIPS

These scholarships are available to students who gain exceptional recognition in certain club or ministry programs. Scholarships require approval from both the ministry organization and Millar. Students must provide a letter or certificate from the ministry organization as evidence of the achievement.

The maximum award per student for any combination of these awards is \$1,000. Up to \$500 of the scholarship amount will be paid during the first semester of the freshman year and the balance during the second semester. Staff children who already receive staff family tuition scholarships are not eligible for these achievement scholarships.

The participating club and ministry programs include Word of Life, Awana, Pioneer Clubs, Club DJ, Child Evangelism Fellowship, Mailbox Club, ACE Academy, and Bible Quizzing.

Please contact finance@millarcollege.ca to request further details.

STUDENT LOANS AND GRANTS

Students who are applying for government student loans and grants are advised to apply as early as possible in order to avoid late charges on their account. Application forms are available online at www.canada.ca (click or search Student Aid). Please plan for financing of any costs that are not covered by the loan.

CORE COURSE SCHEDULE

FIRST YEAR

FALL SEMESTER

Course #	Course Title	Credit Hrs
B1000	Bible Overview	0
B1013	Torah/Hermeneutics I	3
B1033	Introduction to the Gospels	3
M1013	Communications	3
T1003	Theology I	3
	Minimum Electives	4
Total		16

WINTER SEMESTER

Course #	Course Title	Credit Hrs
B1023	Torah/Hermeneutics II	3
B1043	The Book of Acts	3
M1003	Essentials of Discipleship	3
T1013	Theology II	3
	Minimum Electives	4
Total		16

SECOND YEAR

FALL SEMESTER

Course #	Course Title	Credit Hrs
B2023	Historical Books I	3
B2043	Jeremiah, Lamentations and Ezekiel	3
B2053	Romans	3
T2013	Church History I	3
	Minimum Electives	4
Total		16

WINTER SEMESTER

Course #	Course Title	Credit Hrs
B2003	The Gospel and Letters of John	3
B2033	Isaiah	3
B2063	Corinthian Letters	3
T2053	Apologetics & Christian Ethics	3
	Minimum Electives	4
Total		16

THIRD YEAR

FALL SEMESTER

Course #	Course Title	Credit Hrs
B3003	Daniel and Revelation	3
B3013	Prison and Pastoral Letters	3
B3023	Historical Books II	3
B3033	Minor Prophets	3
	Minimum Electives	4
Total		16

WINTER SEMESTER

Course #	Course Title	Credit Hrs
B3043	General Epistles	3
B3053	Old Testament Poetry and Wisdom Lit.	3
M3013	Ministry & Mission of the Local Church	3
T3013	Church History II	3
	Minimum Electives	4
Total		16

Core and elective courses are subject to change.

COURSE DESCRIPTIONS



Additional courses will be offered on a one-time basis during modular weeks based on the availability of adjunct instructors. Elective courses are marked with *.

BIBLE COURSES

B1000 Bible Overview

This course provides an introduction to the 66 books of the Bible with a focus on the major themes, basic content, and contribution of each book to the whole of Scripture.

B1013 Torah/Hermeneutics I

Genesis and Exodus are studied with an emphasis on their foundational role in understanding the themes and hermeneutics of the entire Scriptures and their application to daily life.

B1023 Torah/Hermeneutics II

Leviticus through Deuteronomy are studied with an emphasis on their foundational role in understanding the themes and hermeneutics of the entire Scriptures and their application to daily life.

B1033 Introduction to the Gospels

This course covers the synoptic Gospels (Matthew, Mark, and Luke) with an emphasis on their major events and themes. The historical account of Luke will be followed as the basis for studying the major events of Jesus Christ's life, death, and resurrection.

B1043 The Book of Acts

This course focuses on the birth, development, and global impact of the Christian church under the ministry of the Holy Spirit.

B1052 Historical Geography of the Bible*

This course studies the physical and historical geography of the land of the Bible for the purpose of understanding the

relationship between events recorded in the Bible and its physical environment.

B1062 Bible Characters*

The experiences of significant Old Testament characters are studied with a view to understanding their personal character and walk with God.

B1072 Biblical Archaeology – Old Testament I*

This course surveys the results of excavations in the land of the Bible from the Patriarchal Period until just after the Conquest of the Promised Land under Joshua, with an emphasis on the cultural and historical background of the Old Testament.

B1154 Biblical Greek I: Grammar*

This course provides an introduction to New Testament Greek, with emphasis on reading and pronunciation. Every word used more than 30 times in the New Testament will be memorized.

B1164 Biblical Greek II: Grammar*

This course will solidify the student's understanding of Greek grammar and help establish confidence in reading the Greek New Testament. ⌘ Prerequisite: B1154 Biblical Greek I: Grammar.

B2003 The Gospel and Letters of John

The Gospel and Letters of John are explored with a focus on the deity of Christ and the signs and discourses that support that key theme, as well as instruction related to the Christian life.

B2023 Historical Books I

This course examines the historical books of Joshua through 2 Kings, with a focus on the growth and decline of the nation of Israel.

B2033 Isaiah

The book of Isaiah is studied considering its historical setting and theological importance, particularly that which relates to the first and second coming of Christ and the future of the nation of Israel.

B2043 Jeremiah, Lamentations and Ezekiel

The major themes in the books of Jeremiah, Lamentations, and Ezekiel are explored, focusing on the hope presented by these Old Testament prophets and the fulfillment of prophecy in the coming of the Messiah.

B2053 Romans or B2054 Romans (Greek)

The epistle to the Romans is studied in detail. The student is encouraged to master the teaching of justification and sanctification, the relation of this age to God's program for Israel, and the practical instruction for daily Christian living. B2054 Romans (Greek) will focus on sight-reading and interpreting Romans from the Greek New Testament. ✦ Prerequisite: B1164 Biblical Greek II: Grammar.

B2063 Corinthian Letters or B2064 Corinthian Letters (Greek)

These letters of Paul are examined with an emphasis on the great doctrines of the faith and the practical issues of life in the body of Christ. B2064 Corinthian Letters (Greek) will focus on sight-reading and interpreting the Corinthian Letters from the Greek New Testament. ✦ Prerequisite: B2054 Romans (Greek).

B2084 Biblical Hebrew I: Grammar*

This course introduces Hebrew grammar using the inductive approach. Emphasis is on pronunciation and reading the Hebrew text. All words used more than 100 times in the Hebrew Bible will be committed to memory.

B2094 Biblical Hebrew II: Grammar*

This course will solidify the student's understanding of Hebrew grammar and help establish confidence in reading biblical Hebrew narrative. ✦ Prerequisite: B2084 Biblical Hebrew I: Grammar.

B2112 Biblical Archaeology NT*

This course surveys the results of excavations in the land of the Bible from the Persian Period to the Destruction of the Second Temple (70 AD), with an emphasis on the cultural and historical background of the New Testament.

B2172 Biblical Archaeology – Old Testament II*

This course surveys the results of excavations in the land of the Bible from the formation of the Kingdom of Israel (c. 1050 BC)

until after the destruction of the First Temple (post 587 BC), with an emphasis on the cultural and historical background of the Old Testament.

B3003 Daniel and Revelation or B3004 Daniel and Revelation (Greek)

Detailed consideration is given to the books of Daniel and Revelation, emphasizing the major themes, divisions, methods of interpretation, and theological implications of these books. B3004 Daniel and Revelation (Greek) will focus on sight-reading and interpreting Revelation from the Greek New Testament. ✦ Prerequisite: B2064 Corinthian Letters (Greek).

B3013 Prison and Pastoral Letters

A study of Ephesians, Philippians, Colossians, Philemon, 1 & 2 Timothy, and Titus is undertaken in light of each book's historical setting, theological foundations, and instruction in practical Christian living.

B3023 Historical Books II

This course examines the historical books of 1 Chronicles through Esther, with a focus on the captivity of the nation of Israel and Israel's return to the land.

B3033 Minor Prophets or B3034 Minor Prophets (Hebrew)

Hosea through Malachi are studied with a focus on the historical setting, key theological themes, and spiritual message of each book. B3034 Minor Prophets (Hebrew) will focus on sight-reading and interpreting the Minor Prophets from the Hebrew Bible. ✦ Prerequisite: B2094 Biblical Hebrew II: Grammar.

B3043 General Epistles or B3044 General Epistles (Greek)

Hebrews, James, 1 & 2 Peter, and Jude are studied in detail, examining their teachings and practical implications for believers. B3044 General Epistles (Greek) will focus on sight-reading and interpreting the General Epistles from the Greek New Testament. ✦ Prerequisite: B3004 Daniel and Revelation (Greek).

B3053 Old Testament Poetry and Wisdom Literature or B3054 Old Testament Poetry and Wisdom Literature (Hebrew)

This course concerns itself with an analysis of the background, content, and theological considerations of the Old Testament books of Job through Song of Solomon. B3054 Old Testament Poetry and Wisdom Literature (Hebrew) will focus on sight-reading and interpreting the Old Testament Poetry and Wisdom Literature from the Hebrew Bible. ✦ Prerequisite: B3034 Minor Prophets (Hebrew).

B3071 & B3072 Independent Study*

A course may be created by an instructor for an individual student on a specific topic (based on interest or to meet a specific need in the student's program). All such courses must be approved by the Dean of Education and supervised by a faculty member.

THEOLOGY COURSES

T1003 Theology I

This course introduces the subject of theology and examines theism and the doctrine of God, angels, man, sin, Christ, and the Holy Spirit.

T1013 Theology II

This course examines the biblical teaching on the origin and nature of humanity, God's plan for redeeming sinful man, the nature, purpose, and ministries of the church as well as the topic of last things.



T1042: Contemporary Issues in Theology: Creation Evidences*

The biblical doctrine of creation is introduced and its importance to other foundational Christian doctrines is explored. The positive case for taking the Genesis account of creation as straightforward, historical narrative is set forth. Alternate views are examined and thorough refutations from the Bible, philosophy, history, and science are discussed.

T1052 Contemporary Issues in Theology: Bioethics*

This course will discuss issues in bioethics from a Christian perspective, comparing the biblical perspective with that of other ethical systems.

T1062 Biblical Theology of Christian Worship*

This course surveys scriptural and theological themes of worship, giving a foundational perspective for service and leadership in the local church.

T1072 Secular Trends*

This course examines secularism and its trends in historic and contemporary contexts, how secularism itself is changing in a post-modern society, and subsequent challenges to Christianity.

T1082 Contemporary Cults*

The history, theology, and characteristics of the major cults are studied with a view to developing a biblical evaluation and response to their teaching and influence.

T1092 World Religions*

This course examines the nature of religion as well as the theological and cultural distinctives of the major religions of the world.

T2013 Church History I - Early to Medieval Era

This course covers church history from the first century through the Medieval period and into the early beginnings of the Reformation period.

T2053 Apologetics & Christian Ethics

This course examines the truth claims of the gospel with the goal of responding to contemporary ethical issues and secular questions of faith, truth, and absolutism.

T3013 Church History II - Reformation to the 21st Century

This course covers the Reformation period through the Enlightenment to the present day with a focus on significant leaders, philosophers, theologians, and theological ideas.

MINISTRY COURSES

M1003 Essentials of Discipleship

This study focuses on the nature and development of personal spiritual growth. Students will learn to articulate and share the gospel as portrayed through the book of Galatians. Emphasis will be given to biblical stewardship and living out faith in the workplace.

M1013 Communications

This course focuses on written and oral communication skills. Instruction and practice are provided, equipping the student to research and write a theology paper. A variety of oral communication skills are taught for the purpose of best representing Christ. The base texts for this class are 1 & 2 Thessalonians.

M1052 Children's Evangelism*

This course discusses the needs and characteristics of children with an emphasis on the preparation and presentation of effective biblical messages for the purpose of instruction and evangelism.

M1062 Introduction to Missions*

This course examines the common but critical issues facing missions and missionaries. These issues may include the affluence of the western church, short-term missions teams, and the challenges of contemporary cross-cultural evangelism.

M1072 Ministry to Youth*

Designed to give the student a basic understanding of contemporary youth ministry, this study will seek to nurture a passion for involvement in youth culture and examine effective methods of evangelism, fellowship, and discipleship for this age group.

M2002 Pastoral Ministry*

This practical course covers the nature and requirements of pastoral leadership and pastoral duties such as conducting weddings, funerals, and baptismal services.

M2032 Essentials of Servant Leadership*

This course investigates the essentials of Christian leadership. Areas of focus include the character, motivation, art, and competencies for leadership.

M2052 Foundations for a Christian Marriage*

God's design for single, married, and family life is studied with practical principles to guide the individual through the various stages of relational life.

M2072 Creative Bible Teaching*

Skills in presenting God's truth creatively and in a variety of settings are discussed and practiced. ✕ Prerequisite: M26(02, 12, 22) Principles of Teaching.

M2092 Practical Personal Evangelism*

This course explores a personal approach to sharing the gospel with those who have not received the gospel and emphasizes putting these methods into practice.

M2142 Women and Ministry*

This course focuses on the biblical foundation for women and ministry, with practical examples of how to apply it to everyday life.

M2152 First Nations Ministry*

This course is designed to familiarize the student with a basic understanding of First Nations culture, traditionalism, and spirituality for the purpose of ministering to First Nations people in both urban and rural contexts.

M26(02, 12, 22) Principles of Teaching*

The fundamental elements of Christian education are presented

with specific attention given to principles required for effective teaching.

M27(12, 22, 32) Homiletics*

This course provides principles for and practice in the preparation, structuring, and delivery of expository sermons.

M3013 Ministry and Mission of the Local Church

This course prepares the student to understand and embrace the ministry and mission of the local church.

M3041 & M3042 Preaching Practicum*

This instructor-initiated course provides further opportunity for exploring the discipline of expository preaching. Students will prepare sermons for delivery outside of the campus setting.
✕ Prerequisite: M27(12, 22, 32) Homiletics.

FINE ARTS COURSES

F1002 Chapel Worship Team*

This course provides guidance and instruction to help musicians effectively lead the church in worship.

F1011 College Choir*

The College Choir is a larger vocal ensemble open to all students. The purpose of the College Choir is to provide all students the opportunity to minister in a choral setting. A variety of sacred choral music will be learned.

F1041 & F1042 Applied Music*

Instruction is available in voice, piano, and guitar; other instruments may be offered depending on instructor availability.

F1072 Instrumental Ensemble*

Instrumental Ensemble provides opportunity for study and performance of traditional and/or contemporary ministry-oriented music. Admission is based on audition.

F1082 Drama Fundamentals*

Students will explore the integration of drama into various forms of ministry. They will study the seven fundamentals of drama and participate in a drama performance.

F1092 Descendent Drama Team*

Descendent is a traveling ministry team focused on using drama as a tool to share the gospel and serve the body of believers. Descendent will visit various churches and community venues throughout the year. Admission is based on audition. Descendent may be involved in a spring tour (usually two weeks).

F1102 Replica Worship Team*

Replica is a traveling ministry team focused on contemporary worship music as well as developing musicianship and practical leadership skills. Replica will visit various churches and community venues throughout the year. The team includes vocalists, piano/synth, guitar, bass, drums, and technical support positions. Admission is based on audition. Replica may be involved in a spring tour (usually two weeks).

F1121 & F1131 Practical Worship Team Skills*

These courses provide an overview of the skills required for serving with a contemporary worship team, including musical, technical, and leadership development. These are required classes for students on Replica or a chapel worship team for the first time.

F1142 Songwriting*

This class develops creative and technological skills in writing songs, beginning at inspiration through to final product. Topics covered include writing words, writing music, editing and rewriting, co-writing, and how to share a finished song.

F1152 Worship Leadership*

This course is a general leadership class on how to structure worship in the local church. Classes will cover various approaches to service design, planning events and celebrating special seasons, and understanding the place of music and the arts in contemporary worship.

F1162 Technologies for Worship*

Technology often has a prominent place in contemporary worship services. This class will give a foundation for a Christian response to the use of technology and give practical skills in working with current audio and media technologies.



F1172 History of Christian Worship*

This course surveys the rich history of worship in the Christian church covering apostolic to contemporary periods. Students will explore how the church has engaged in biblical actions of worship and how these have influenced how the church worships today.

F2042 & F2052 Music Practicum I & II*

Advanced students will undertake a large project involving the leadership of areas including musical ensemble, arranging

music, and developing a musical production during the academic year. Admission is based on the approval of the Director of Fine Arts.

F2082 Practical Drama Ministry Skills*

Through practical applications, students will use skills learned from F1082 Drama Fundamentals to equip them for ministry. The class will include studies on script writing, directing and managing a production, improvisation, digital theatre, and leading workshops. ⌘ Prerequisite: F1082 Drama Fundamentals.

ATHLETICS COURSES

S1041 Effective Sports Ministry*

Students participating on Millar sports teams are required to take this course, which focuses on character development and evangelism as they relate to athletic participation.

S10(51, 62, 71, 72, 82, 92) Sports Team*

Millar's sports teams emphasize skill development, outreach, and evangelism. Placement on teams is based on ability and effort. Sports offered are soccer, volleyball, futsal, basketball, and hockey.



S20(12, 22, 32) Coaching and Your Faith*

This course takes a practical look at integrating coaching with Christian faith, focusing on using coaching opportunities to be a light for God. Classes cover basketball and volleyball in alternating years and provide students with an opportunity to work towards their National Coaching Certification Program (NCCP).

S2041 Effective Sports Leadership*

Upperclassmen participating on Millar's sports teams are required to take this course. It focuses on leadership as an integral part of the success of any team, group, or organization and gives athletes tools to be effective leaders in their sport.

S2152 Effective Sports Evangelism*

This course studies the opportunity athletics provides for evangelism and explores effective methods for using this platform to spread the gospel. In-class instruction is paired with practical opportunities both locally and abroad.

Pambrun PERSONNEL



ARNIE ARMSTRONG
Dean of Education

Okanagan Bible College, Diploma in Greek Bible, 1982; Prairie Bible Institute, B.Th., 1983; Canadian Theological Seminary, M.A., 2000; Pastoral Ministry, 1980-present; Millar staff since 2000.



SHARON ARMSTRONG
Receptionist

Canadian Bible College, B.A. in Religion, 1996; Optometric Assistant, 1979-2009; Millar staff since 2001.



CHRIS BROWN
Registrar

Millar College of the Bible, B.A. in Strategic Ministries, 2011; Canadian Baptist Theological Seminary, Master of Biblical Studies (in process); Millar staff since 2012.



RICHARD BUECKERT
Director of Student Work

Prairie Bible Institute, B.R.E., 1987; Prairie Bible College, ETTA Certificate, 1987; Youth & Pastoral Ministry, 1987-1993; Millar staff since 1997.



MIKE CALLAWAY
Athletics

Millar College of the Bible, Bachelor of Biblical Studies, 2013; Prairie College, B.A. in Ministry, 2017; Grace College & Seminary, Masters in Athletic Administration, 2018; Prairie Christian Academy, Athletic Director, 2013-2018; Millar staff since 2018.



ANDREW ENNS
Food Services

Millar College of the Bible, Impact Certificate, 2011; Saskatchewan Polytechnic, Red Seal Chef, 2016; Millar staff since 2011.



PRESTON EVANS
Maintenance Manager

Millar College of the Bible, Bachelor of Biblical Studies, 2013; Thompson Rivers University, Red Seal Carpenter, 2021; Millar staff since 2014.



LORN GIECK
Director of Fine Arts

Prairie Bible College, B.A. in Sacred Music, 1998; Briercrest Seminary, M.A., 2009; Institute for Worship Studies, Doctor of Worship Studies, 2018; Pastoral Ministry, 2000-2015; Millar staff since 2015.



CLIFF GIESBRECHT
Facilities Manager

Millar College of the Bible, B.A. in Strategic Ministries, 2003; SAIT, Electrician, 2021; Millar staff since 2003.



AMY HANCOCK
Librarian

Millar College of the Bible, B.A. in Strategic Ministries, 2006; Briercrest Seminary, M.A. in Theology, Old Testament, 2015; Millar staff since 2008.



MICHELE HARDER
Dean of Women

Briercrest Bible College, B.A. in General and Biblical Studies, 1997; Briercrest Biblical Seminary, M.A. in Leadership and Management, Education Major, 2002; Millar staff since 2004.



MURRAY HIEBERT
Academic Dean

Providence College, B.A. in Biblical Studies, 1997; Briercrest Seminary, Graduate Studies, 1999-2000; Jerusalem University College, M.A. in Biblical History and Geography, 2008; Millar staff since 2008.



TRAVIS JOHNSTON
Instructor

Millar College of the Bible, B.A. in Strategic Ministries, 2007; Briercrest Seminary, M.A. in Biblical Languages and Exegesis, 2021; Pastoral Ministry, 2008-2015; Millar staff since 2015.



MATT KLUMPENHOWER
Dean of Men

Millar College of the Bible, B.A. in Strategic Ministries, 2017; Millar staff since 2017.



MIKAYLA MARTENS
Admissions

Millar College of the Bible, B.A. in Biblical Studies, 2020; Millar staff since 2020.



ADAM NICHOLAS
Technology Manager

ComputerAid, Lead Technical and Software Support, 1998-2011; ITS Global, Director of Technical and Software Support, 2011-2013; Millar staff since 2014.



HARRY PETERS
Director of Operations

Millar Memorial Bible Institute, 1974-1975; Capernwray Harbour Bible School, Diploma, 2002-2003; Commercial Construction, 1970-1980; Real Estate, Commercial Leasing, Property Management, Broker, 1981-2002; Millar staff since 2003.



KEVIN PETERS
Director of Athletics / Ministries

Millar College of the Bible, Diploma, 1996; Briercree Bible College, B.A. in Sports Ministry, 1998; National Coaching Certification Program, Advanced Development Coach; ChPC, Professional Coach Designation, 2018; Millar staff since 1998.



PHIL POWERS
Graduate Program

Dallas Theological Seminary, Th.M. in Bible Exposition, 1981; Dallas Theological Seminary, Ph.D. in Bible Exposition, 1995; Pastoral Ministry, 1981-1988, 2000-2018; Capital Bible Seminary, Professor of Bible, 1995-2013; Millar staff 1991-1995 and since 2018.



HOPE RAMPOLD
Food Services Manager

Millar College of the Bible, Diploma, 1992; NAIT, Red Seal Chef, 1994; Eagle's Nest Catering, 2004-2012; Millar staff since 2012.



RANDY REDDEKOPP
Food Services

Millar College of the Bible, B.A. in Strategic Ministries, 1995; Youth & Pastoral Ministry, 1990-1993, 1998-1999; Bible Camp Director, 1993-1995; Baker, 2000-2003; Millar staff 1995-1999 and since 2003.



REBECCA REIMER
Dean of Women

SAIT, Dental Assisting Certificate, 2019; Millar College of the Bible, B.A. in Biblical Studies, 2021; Millar staff since 2021.



JOEL RUTEN
Facilities

Millar College of the Bible, Bachelor of Biblical Studies, 2010; Millar staff since 2014.



PHIL RUTEN
President

Millar Memorial Bible Institute, Diploma, 1983; University of Saskatchewan, B.Ed., 1994; Trinity Western University, M.A. in Leadership, 2009; High School Teacher, 1994-1997; Millar staff since 1994.



SHANIA RUTEN
Fine Arts

Millar College of the Bible, Bachelor of Biblical Studies, 2018; Millar staff since 2018.



AARON TEICHROEB
Facilities

SAIT, Journeyman Sheet Metal Worker, 2010; Millar College of the Bible, Bachelor of Biblical Studies, (in process); Millar staff since 2017.



ART THIESSEN
Public Relations

Millar Memorial Bible Institute, Diploma, 1977; National Coaching Certification Program, Level III-Soccer, Level III-Basketball, Level III-Hockey, Level II-Volleyball; One Hope Canada, Camp Ministry, 1978-1980, 1994-2018; Millar staff 1980-1994 and since 2019.



KELVIN THIESSEN
Director of Admissions

Millar College of the Bible, B.A. in Strategic Ministries, 1992; Youth Ministry, 1992-1995; Bible Camp Director, 1992-1995; Millar staff since 1996.



MARK WALLMANN
Facilities

Millar College of the Bible, B.A. in Biblical Studies, 2020; Millar staff since 2020.



TRAVIS WINFREY
Business Manager

Washington and Lee University, B.S. in Commerce, 1999; Regent College, Diploma in Christian Studies, 2009; Financial Analyst, 1999-2004; Africa Inland Mission, Teacher, 2005; Youth Ministry, 2006-2007; Union Gospel Mission, 2009-2010; Millar staff since 2010.



AL WINTEMUTE
Director of 4th Year Program

Niagara College of Applied Arts & Technology, Mechanical Engineering Technology, 1994; Millar College of the Bible, Bachelor of Biblical Studies, 2015; Engineered Air, 1997-2001; TRANE Canada, 2001-2012; Millar staff since 2015.



MEGAN ZACHARIAS
Administrative Assistant

Millar College of the Bible, B.A. in Strategic Ministries, 2017; Millar staff since 2017.

WELCOME TO MILLAR COLLEGE OF THE BIBLE



STEVE JANZ
EXECUTIVE DIRECTOR SUNNYBRAE



Thanks for taking time to look through our catalogue. The purpose at our British Columbia campus is the same as our other Millar campuses — to develop passionate, relevant servants of Jesus Christ who are shaped by the entire Scriptures.

TABLE OF CONTENTS

ACADEMIC CALENDAR	25
ATHLETICS	26
WORSHIP ARTS	26
OUTDOOR EDGE	27
FINANCIAL INFORMATION	28
FINANCIAL ASSISTANCE	29
CORE COURSE SCHEDULE	30
COURSE DESCRIPTIONS	31
PERSONNEL	35

Located in the interior of BC, Millar Sunnybrae has a decidedly different feel to it. If you want the opportunity to study the Bible and grow in your relationship with God while surrounded by beautiful lakes and mountains, then our Sunnybrae Campus might be the place for you!

www.millarcollege.ca/sunnybrae

ACADEMIC CALENDAR

2023-2024

FALL SEMESTER 2023

Upperclassmen Arrive	Sept. 7
Freshmen Arrive	Sept. 8
Registration	Sept. 8 - 9
Opening Sunday	Sept. 10
First Day of Classes	Sept. 11
Semester Break	Oct. 23 - 29
Modular Courses	Oct. 30 - Nov. 3
Final Exams	Dec. 18 - 20
Christmas Holidays	Dec. 21 - Jan. 6*

WINTER SEMESTER 2024

Arrive Back on Campus	Jan. 6*
Opening Sunday	Jan. 7
First Day of Classes	Jan. 8
Modular Courses	Jan. 8 - 12
Missions Conference	Jan. 26 - 28
Semester Break	Feb. 24 - Mar. 3
Classes Resume	Mar. 4
Final Exams	TBD
Commencement	TBD

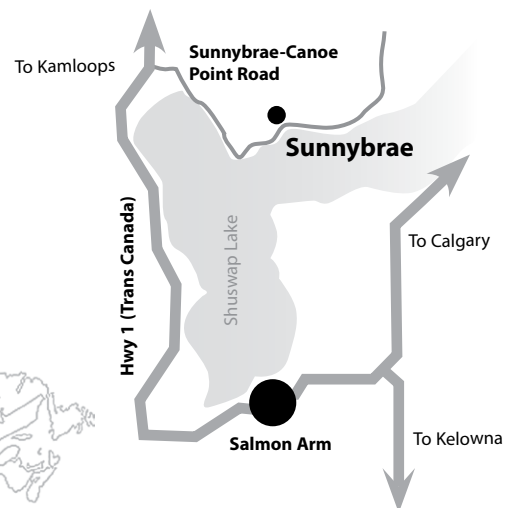
* Please note that this is a Saturday.

Do not make final travel plans without consulting the college first. These dates are subject to change.



SUNNYBRAE CAMPUS HISTORY

A group of pastors and church leaders, including Sunnybrae Bible Camp, approached Millar about starting a campus in the BC interior. They saw a need for Bible-centered training in their area. The Sunnybrae Campus officially launched in the fall of 2012 in partnership with Sunnybrae Bible Camp.



ATHLETICS



CAMPUS RECREATION

Students are given opportunities to play a variety of sports, which help them to stay active and enjoy physical fitness.

- Basketball
- Beach Volleyball Court
- Dodgeball
- Floor Hockey
- Gymnasium
- Hiking
- Hockey
- Indoor Soccer
- Lake Activities
- Ultimate Frisbee
- Volleyball
- Wall Climbing

COMPETITIVE COMMUNITY SPORTS

- Co-ed Indoor Soccer League
- Co-ed Volleyball League
- Men's Basketball League



BE ACTIVE

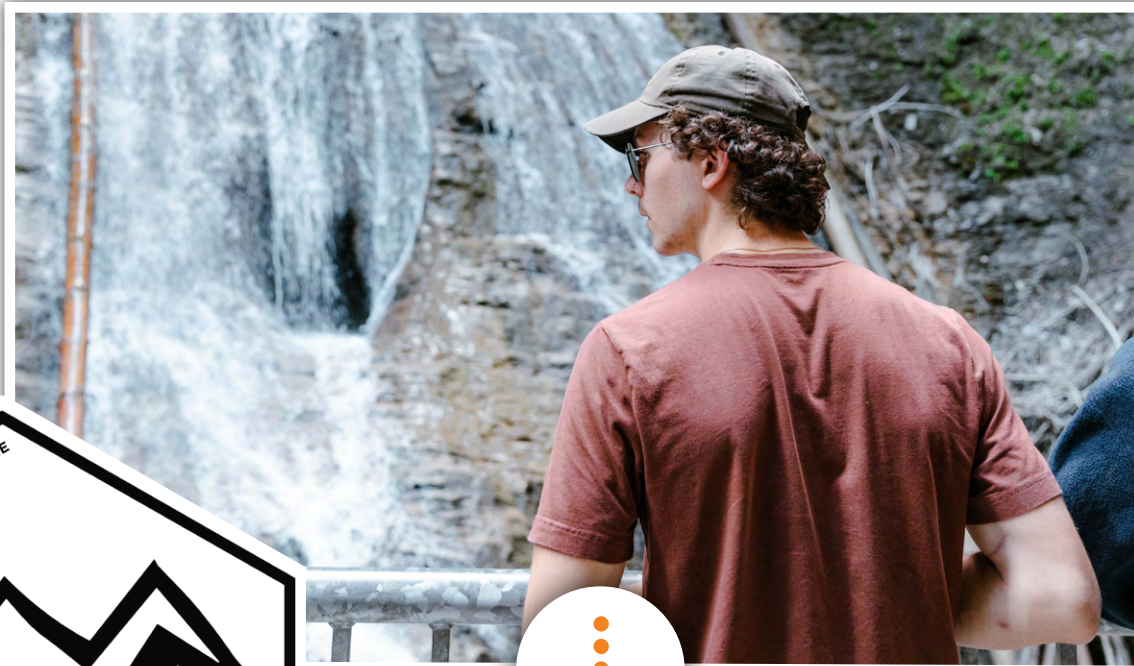
Worship Arts

The Worship Arts program at Sunnybrae focuses on corporate worship and prepares students to serve effectively in the church. Students receive many opportunities to lead worship on campus and in local churches.

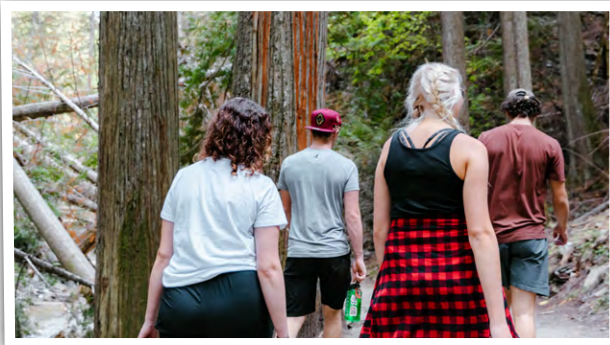
THE WORSHIP ARTS PROGRAM INCLUDES:

- classroom instruction on worship theology
- mentoring in worship leadership
- participation in chapel worship teams





Outdoor Edge will push students to consider how the Bible and the outdoors interact with each other. Through classroom instruction and trips to the mountains and lakes for skill development, each student will be challenged to see God's glory through His creation.



COURSE OBJECTIVES

- Equip students to be competent in various outdoor settings
- Give a biblical overview of the role of Christians as stewards of nature
- Understand the scriptural mandate for personal care and health
- Use the outdoors as a platform to develop ministry skills

COURSE ACTIVITIES

- Camping
- Canoeing/Kayaking
- Climbing
- First Aid
- Hiking
- Mountain Biking
- Orienteering
- Skiing/Snowboarding

NEW STUDENT APPLICATION FEE (NON-REFUNDABLE) 50

COST OF TUITION, ROOM & BOARD (PAYMENT DUE UPON ARRIVAL EACH SEMESTER)

Student fees cover the majority of a student's cost to attend Millar, but a significant amount is graciously provided by donations from alumni and friends of the college. Students are normally expected to enroll in a full course load. Single students are expected to live in dorms, although exceptions may be made for mature students. The college will help student families and mature students find rental housing in the area.

DORM STUDENTS

Tuition (per semester)	4,200
Room and Board (per semester)	3,575
Tuition, Room & Board (full year)	15,500
Security Deposit (one-time, refundable)	200
Textbooks (estimate, per semester)	400

NON-DORM STUDENTS (FAMILIES AND MATURE STUDENTS)

Tuition (per semester)	4,200
Note: Spouses of full-time students receive 33% discount	
Textbooks (estimate, per semester)	400

FOURTH YEAR INTERNS

Tuition (\$478 per module x 7 modules)	3,346
Internship Fee (\$2,152 per semester x 2 semesters)	4,304
Room and Board (\$160 per module x 7 modules)	1,120
Tuition, Room & Board (full year)	8,770
Textbooks (estimate, per semester)	100

OTHER FEES

Audit Rate (per credit hour)	135
Note: Spouses of full-time students may audit up to 5 credits per semester at no charge	
Exam Rescheduling Fee (per exam)	100
Third-Year Graduation Fee	150
Fourth-Year Graduation Fee	175
Outdoor Edge (approximate, varies by trip)	150

CASH DISCOUNT

A discount on tuition and room and board will be given if fees are paid in full at registration by cheque, debit, e-transfer, or cash. The discount for students in first, second, or third year is \$100 per semester, and the discount for students in fourth year is \$50 per semester.

LATE PAYMENT OF FEES

All fees are due on registration day. Semester fees not paid in full by noon on the last business day of the opening month will be assessed a finance fee of \$25. Additionally, a monthly overdue charge of 1% of the unpaid balance will be assessed on the last business day of each month thereafter.

REFUND POLICY

Refunds are made at the discretion of the college. In most cases, any student who withdraws before the end of the semester will forfeit tuition for the semester and room and board fees for the month in which the student leaves campus. In cases where sickness is a factor and a student leaves for four weeks or more, the student may apply for a pro-rated refund.

Financial Assistance

CHRISTIAN WORKERS BURSARY

A bursary for 10% of tuition will be awarded to students whose parents are engaged in full-time Christian ministry (missionaries, pastors, evangelists, camp staff, and other parachurch organizations). To apply, complete the section on the application form.

HERBERT W. PEELER MEMORIAL BURSARY

Two annual entrance bursaries of \$1,000 are awarded to first-year students based on financial need. Students must apply before June 1 to be eligible. Application form available online at www.millarcollege.ca/apply.

KARSGAARD BURSARY

Eight entrance bursaries of \$1,000 are available annually to first-year students based on financial need. Students must apply before June 1 to be eligible. Application form available online at www.millarcollege.ca/apply.

RECRUITMENT BURSARY

A \$250 bursary (\$125 per semester for one academic year) will be awarded to each student who personally recruits a new freshman student. The applicant must indicate this student on his/her application form.

STUDENT AID FUND

As funds are available, students are selected for Student Aid according to financial need and good standing at Millar. Applications are available from the Student Life department.

WILLIAM WIGGINS MEMORIAL BURSARY

This \$400 bursary is presented to a Millar student who intends to pursue cooking as a ministry. Applicants must have applied to a culinary arts program in an accredited school and submit a written essay to the Wiggins family describing their interest in ministering through the culinary arts.

YOUTH & CHILDREN'S MINISTRY ACHIEVEMENT SCHOLARSHIPS

These scholarships are available to students who gain exceptional recognition in certain club or ministry programs. Scholarships require approval from both the ministry organization and Millar. Students must provide a letter or certificate from the ministry organization as evidence of the achievement.

The maximum award per student for any combination of these awards is \$1,000. Up to \$500 of the scholarship amount will be paid during the first semester of the freshman year and the balance during the second semester. Staff children who already receive staff family tuition scholarships are not eligible for these achievement scholarships.

The participating club and ministry programs include Word of Life, Awana, Pioneer Clubs, Club DJ, Child Evangelism Fellowship, Mailbox Club, ACE Academy, and Bible Quizzing.

Please contact finance@millarcollege.ca to request further details.

STUDENT LOANS AND GRANTS

Students who are applying for government student loans and grants are advised to apply as early as possible in order to avoid late charges on their account. Application forms are available online at www.canada.ca (click or search Student Aid). Please plan for financing of any costs that are not covered by the loan.

CORE COURSE SCHEDULE

FIRST YEAR

FALL SEMESTER

Course #	Course Title	Credit Hrs
B1000	Bible Overview	0
B1033	Introduction to the Gospels	3
B1113	Torah	3
M1013	Communications	3
T1003	Theology I	3
	Minimum Electives	4
Total		16

WINTER SEMESTER

Course #	Course Title	Credit Hrs
B1123	Hermeneutics	3
B1143	Acts and Galatians	3
M1003	Essentials of Discipleship	3
T1013	Theology II	3
	Minimum Electives	4
Total		16

SECOND YEAR

FALL SEMESTER

Course #	Course Title	Credit Hrs
B2003	The Gospel and Letters of John	3
B2033	Isaiah	3
T2023	Theology III	3
T2053	Apologetics and Christian Ethics	3
	Minimum Electives	4
Total		16

WINTER SEMESTER

Course #	Course Title	Credit Hrs
B2023	Historical Books	3
B2053	Romans	3
B2063	Corinthian Letters	3
T2013	Church History I	3
	Minimum Electives	4
Total		16

THIRD YEAR

FALL SEMESTER

Course #	Course Title	Credit Hrs
B3033	Minor Prophets	3
B3103	Jeremiah, Lamentations and Ezekiel	3
T3003	Theology IV	3
T3013	Church History II	3
	Minimum Electives	4
Total		16

WINTER SEMESTER

Course #	Course Title	Credit Hrs
B3003	Daniel and Revelation	3
B3013	Prison and Pastoral Letters	3
B3043	General Epistles	3
B3053	Old Testament Poetry and Wisdom Lit.	3
	Minimum Electives	4
Total		16

Core and elective courses are subject to change.

COURSE DESCRIPTIONS

Additional courses will be offered on a one-time basis during modular weeks based on the availability of adjunct instructors. Elective courses are marked with *.



BIBLE COURSES

B1000 Bible Overview

This course provides an introduction to the 66 books of the Bible with a focus on the major themes, basic content, and contribution of each book to the whole of Scripture.

B1033 Introduction to the Gospels

This course covers the synoptic Gospels (Matthew, Mark, and Luke) with an emphasis on their major events and themes. The historical account of Luke will be followed as the basis for studying the major events of Jesus Christ's life, death, and resurrection.

B1113 Torah

This course focuses on the first five books of the Old Testament (Genesis to Deuteronomy). It traces Old Testament history and theology from creation to Israel's preparation to enter the land.

B1123 Hermeneutics

Hermeneutics is the science and art of interpretation. This course seeks to help the student understand and interpret the Bible through observation, interpretation, correlation, and application to Christian life.

B1143 Acts and Galatians

Through an examination of the history and theology of both Acts and Galatians, this course focuses on the birth, development, and global impact of the Christian church under the ministry of the Holy Spirit.

B2003 The Gospel and Letters of John

The Gospel and Letters of John are explored with a focus on the deity of Christ and the signs and discourses that support that key theme, as well as instruction related to the Christian life.

B2023 Historical Books

This course deals with the history of Israel from the time of their entrance into the land through to their restoration from Babylonian Captivity. It will cover the books of Joshua through Esther.

B2033 Isaiah

The book of Isaiah is studied considering its historical setting and theological importance, particularly that which relates to the first and second coming of Christ and the future of the nation of Israel.

B2053 Romans

The epistle to the Romans is studied in detail. The student is encouraged to master the teaching of justification and sanctification, the relation of this age to God's program for Israel, and the practical instruction for daily Christian living.

B2063 Corinthian Letters

These letters of Paul are examined with an emphasis on the great doctrines of the faith and the practical issues of life in the body of Christ.

B2073 Biblical Greek I: Grammar*

This course provides an introduction to New Testament Greek with emphasis on learning the alphabet, the grammar of nouns,

and an introduction to the Greek verb system. The student will memorize approximately 75% of NT vocabulary and practice translating in the workbook.

B2103 Biblical Greek II: Grammar*

This course is a continuation of Biblical Greek I: Grammar and builds on the student's understanding of the Greek verb system to help establish confidence in reading the Greek New Testament. ⌘ Prerequisite: B2073 Biblical Greek I: Grammar.

B2202 A Selective Study in the Psalms*

This course offers an in-depth study of 16 psalms that are divided into three units: The Royal Psalms (God is King), Psalms of Personal Reflections, and The Messianic Psalms.

B3003 Daniel and Revelation

Detailed consideration is given to the books of Daniel and Revelation, emphasizing the major themes, divisions, methods of interpretation, and theological implications of these books.

B3013 Prison and Pastoral Letters

A study of Ephesians, Philippians, Colossians, Philemon, 1 & 2 Timothy, and Titus is undertaken in light of each book's historical setting, theological foundations, and instruction in practical Christian living.

B3033 Minor Prophets

Hosea through Malachi are studied with a focus on the historical setting, key theological themes, and spiritual message of each book.

B3043 General Epistles

Hebrews, James, 1 & 2 Peter, and Jude are studied in detail, examining their teachings and practical implications for believers.

B3053 Old Testament Poetry and Wisdom Literature

This course concerns itself with an analysis of the background, content, and theological considerations of the Old Testament books of Job through Song of Solomon.

B3103 Jeremiah, Lamentations and Ezekiel

The major themes in the books of Jeremiah, Lamentations, and Ezekiel are explored, focusing on the hope presented by these Old Testament prophets and the fulfillment of prophecy in the coming of the Messiah.



THEOLOGY COURSES

T1003 Theology I

This course introduces the subject of theology and examines the biblical teaching of the authority, nature, inspiration, and canonicity of Scripture as well as a special focus on the highest point of revelation: the Gospel of Jesus Christ.

T1013 Theology II

Theology II deals with the doctrines of God (Theology Proper), Christ (Christology), and the Holy Spirit (Pneumatology). It will examine these doctrines from the perspective of systematic and historical theology.

T1042 Contemporary Issues in Theology*

This course studies selected theological issues that have impacted or are significantly impacting Christian thought, the church, and the larger community. The central content will vary annually.

T1082 Cults*

The history, theology, and characteristics of the major cults are studied with a view to developing a biblical evaluation and response to their teaching and influence.

T1092 World Religions*

This course examines the nature of religion as well as the theological and cultural distinctives of the major religions of the world.

T2013 Church History I - Early to Medieval Era

This course covers church history from the first century through the Medieval period and into the early beginnings of the Reformation period.

T2023 Theology III

This course examines the biblical teaching regarding Anthropology (the origin and nature of humanity), Hamartiology (the biblical instruction on sin), and Soteriology (God's plan for redeeming fallen humanity).

T2053 Apologetics and Christian Ethics

This course examines the truth claims of the gospel with the goal of responding to contemporary ethical issues and secular questions of faith, truth, and absolutism.

T3003 Theology IV

This course deals with the biblical doctrines of Cosmogony (Creation), Ecclesiology (Church), and Eschatology (end times).

T3013 Church History II - Reformation to the 21st Century

This course covers the Reformation period through the Enlightenment to the present day with a focus on significant leaders, philosophers, theologians, and theological ideas.

T3071 & T3072 Independent Study*

A course may be created by an instructor for an individual student on a specific topic (based on interest or to meet a specific need in the student's program). All such courses must be approved by the Academic Dean and supervised by a faculty member.

T3092 Advanced Apologetics*

This course will build on the apologetic principles established in Apologetics and Christian Ethics with the goal of building individual faith and gaining tools for evangelism by exploring answers to difficult questions about God, the Bible, and Christian faith. ⌘ Prerequisite: T2053 Apologetics and Christian Ethics.

WORSHIP ARTS COURSES

F1002 Chapel Worship Team*

Students with musical or technical (sound and A/V) abilities are encouraged to lead in chapel worship. The chapel music coordinator will place students on teams and provide guidance, but the team will select and lead music in chapels.

F1041 Applied Music*

Private instruction in specific instruments may be offered depending on instructor availability.

F1202 Theology and Practice of Worship*

This course explores and defines the goal behind worship, as well as the many results and effects the worship of God has in churches and in one's personal life. This class is appropriate for all believers; no musical experience is necessary.

F2002 Chapel Worship Team Leadership I*

This course develops an understanding of the individual and corporate roles in worshipping God. The student will be involved in basic leadership and planning of worship. In addition to practices and performances, ten hours of reading and homework are required.

F3002 Chapel Worship Team Leadership II*

Students will gain experience as they lead a Chapel Worship Team on a regular rotation. This course includes instruction and accountability in leading a worship team.

MINISTRY COURSES

M1003 Essentials of Discipleship

This course focuses on developing habits that mark the changed life of a follower of Jesus. It addresses topics such as the believer's prayer life, devotional life, confession, fitness, finances, entertainment, and vocation.

M1013 Communications

This course focuses on written and oral communication skills. Instruction and practice are provided, equipping the student to research and write a theology paper. A variety of oral communication skills are taught for the purpose of best representing Christ.

M1042 Ministry to Children*

This course discusses the needs and characteristics of children with an emphasis on the preparation and presentation of effective biblical messages for the purpose of instruction and evangelism.

M1062 Introduction to Missions*

This course examines the common but critical issues facing missions and missionaries. These issues may include the affluence of the western church, short-term missions teams, and the challenges of contemporary cross-cultural evangelism.

M1072 Ministry to Youth*

Designed to give the student a basic understanding of contemporary youth ministry, this study will seek to nurture a passion for involvement in youth culture and examine effective methods of evangelism, fellowship, and discipleship for this age group.

M1082 Fundamentals of Camp Leadership*

In this practical study, attention is given to developing a philosophy of ministry for evangelism and learning skills for programming, staffing, and directing a camp ministry.

M1152 Cross Cultural Ministry*

This course focuses on the necessity and responsibility Christians have to missions worldwide by exploring how to be effective in cross-cultural missions and experiencing ministry in a cross-cultural setting.

M2002 Pastoral Ministry I*

Pastoral Ministry I provides an introduction to the theology, theory, and practice of pastoral ministry in the local church. It will also provide practical instruction in pastoral ministry (e.g. baptism, communion, weddings, funerals, conducting board meetings, sermon planning, and scheduling).

M2032 Essentials of Servant Leadership*

This course investigates the essentials of Christian leadership. Areas of focus include the character, motivation, art, and competencies for leadership.

M2062 Principles of Teaching*

The fundamental elements of Christian education are presented with specific attention given to principles required for effective teaching.

M2142 Women and Ministry*

This course will focus on the biblical foundation for women who serve in vocational and volunteer roles in ministry and present tools for women to implement into everyday life.

M2162 Applied Student Leadership*

This course is for upperclassmen who have been chosen to be a part of the Student Leadership Team. Students will receive practical teaching that builds them up in their current roles and prepares them for leadership roles they may step into after their time at Millar.

M2712 Homiletics*

This course provides principles for and practice in the preparation, structuring, and delivery of expository sermons.

M3002 Pastoral Ministry II*

This course is a continuation of Pastoral Ministry I. It will continue to provide practical instruction in pastoral ministry (e.g. vision casting, governance, budgeting, conflict) and also contemporary issues facing today's pastors (e.g. administration, self-leadership, team leadership, and development).

α Prerequisite: M2002 Pastoral Ministry I.

ATHLETICS COURSES

S1011 Local Sports Team Involvement*

This program, made possible through partnership with local leagues, provides students with an opportunity to be involved on community sports teams. There are a variety of options such as indoor soccer, volleyball, and basketball. Students will practice and play regularly throughout the different sports seasons.

S1112 Outdoor Edge A*

This course will demonstrate how the Bible and the outdoors interact with each other through classroom participation and skill development. It will seek to provide a theology of environmental stewardship as well as provide practical training in various outdoor pursuits, such as mountain biking, rock climbing, camping, hiking, and canoeing.

S1122 Outdoor Edge B*

Outdoor Edge B is an extension of Outdoor Edge A. It will focus on outdoor survival as well as involvement in winter sports such as snowboarding, downhill skiing, and snowshoeing.

S1142 Outdoor Edge – Evangelism*

Various tools for evangelism are taught with an emphasis on using gifts and abilities to reach the lost. Using a platform of skiing/snowboarding, the student will spend two days on the hill putting into practice the skills that were taught in class.

S1152 Outdoor Edge – First Aid & CPR Level C*

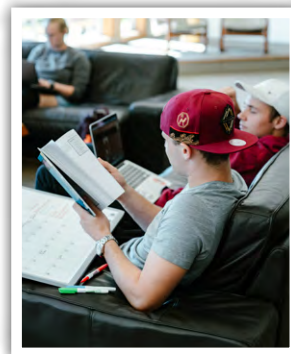
This course will address a variety of topics including cardiovascular, head and spine, and breathing emergencies. The CPR C component will cover the skills needed to respond to choking adults and children.

S2112 Outdoor Edge – Practical*

This course will focus on teaching event planning and organization using a multi-day hike as the event. At the end of the course, the students will see their hard work come to fruition as they will have an opportunity to participate in a multi-day hike in the beautiful mountains of British Columbia.

S2122 Outdoor Edge – Leadership & Group Events*

This course will equip students to lead adventure trips. Special attention will be given to the importance of a servant's heart. Hands-on experience will be received through a multi-day camping and hiking trip with a group of students.



S2142 Outdoor Edge Hiking Trip*

This course will take students on a 9-10 day hiking and camping trip with emphasis on visiting national parks in the USA. It will emphasize developing healthy physical habits, good hiking practices, and boldness in evangelism.

Sunnybrae PERSONNEL



LEAH CAMPBELL **Worship Arts**

Peace River Bible Institute, Bachelor of Biblical Studies, 2005; Millar College of the Bible, Master of Biblical Studies (in process); Peace River Bible Institute, 2005-2006; Davison Orchards, Management/Marketing, 2007-2017; Millar staff since 2017.



RYAN CAMPBELL **Dean of Men**

NAIT, Business Management Diploma, 2000; Peace River Bible Institute, Bachelor of Religious Studies - Youth Ministry Major, 2004; Peace River Bible Institute, Associate Dean of Men, 2005-2007; Pastoral Ministry, 2011-2015; Millar staff since 2015.



MELISSA COCHRANE **Admissions**

Millar College of the Bible, B.A. in Strategic Ministries, 2016; Millar staff since 2016.



PAM DERKSEN **Food Services Manager**

Fermco, Event Planning, 1991-2007; Faith Mission, 2007-2010; Nor-Val, Event Rentals, 2010-2013; Sunnybrae Bible Camp staff since 2013.



GRACE FLETCHER **Office Administrator**

Peace River Bible Institute, B.R.E., 2014; Millar staff since 2015.



STEVE JANZ **Executive Director** **Sunnybrae**

ETTA, Advanced Teachers Certificate, 1986; Millar College of the Bible, B.A. in Strategic Ministries, 2011; Crest Leadership, MCL, 2017; Pastoral Ministry, 1987-2011; Millar staff since 2011.



TREVOR KIRIAKA **Academic Dean**

Millar College of the Bible, B.A. in Strategic Ministries, 1993; Prairie Graduate School, M.Div., 1997; Golden Gate Baptist Theological Seminary, D.Min., 2012; Pastoral Ministry, 2002-2012; Millar staff 1996-2002 and since 2012.



D. KROEKER **Director of** **Graduate Program**

Briercrest Bible Institute, B.R.E. in Pastoral Studies, 1977; Trinity Western Seminary, Graduate Studies, 1986-1989; Trinity Theological Seminary, M.S.L., 1990; Trinity Theological Seminary, Ph.D. in Christian Education, 1993; Pastoral Ministry, 1977-2016; Global Ministry, 2006-present; Millar staff since 2017.



PETER MITCHELL **Instructor**

New Brunswick Bible Institute, Diploma of Biblical Studies, 1986; Briercrest Bible College, B.A. of Theology, 1991; Briercrest Seminary, M.A. in Theology, 1993; Briercrest College and Seminary, Assistant Professor of Bible and Theology, 1991-2008; Moose Jaw Police Service Chaplain, 2007-2011; Millar staff since 2013.



TIM PAQUETTE **Director of Operations**

Peace River Bible Institute, B.R.E., 1996; Pastoral Ministry, 1996-2006; Church Planting, 2006-2011; Sunnybrae Bible Camp staff since 2012.



DAVID RUTEN **Registrar / Director** **of Outdoor Edge**

Millar College of the Bible, Master of Biblical Studies, 2022; Millar staff since 2011.



DANIEL SPELLISCY **Instructor**

Millar College of the Bible, Bachelor of Biblical Studies, 2012; Canadian Southern Baptist Seminary and College, M.Div., 2016; Youth Pastor, 2014-2020; Millar staff since 2020.



JENNILEE VELLACOTT **Dean of Women**

Millar College of the Bible, B.A. in Strategic Ministries, 2011; Crossworld, International Worker in Cambodia, 2013-2015; Millar staff since 2016.

WELCOME TO MILLAR COLLEGE OF THE BIBLE



PETER BUHLER
EXECUTIVE DIRECTOR WINNIPEG



Thanks for taking time to look through our catalogue. Our purpose at the Winnipeg Campus is the same as our other Millar campuses – to develop passionate, relevant servants of Jesus Christ who are shaped by the entire Scriptures.

Located in the heart of Winnipeg, Manitoba, Millar Winnipeg is surrounded by many diverse cultures and opportunities. If you want to study the Bible and grow in your relationship with Jesus surrounded by cross-cultural and urban ministry opportunities, our Winnipeg Campus might be for you!

TABLE OF CONTENTS

ACADEMIC CALENDAR	37
URBAN EDGE	38
NIGHT SCHOOL	38
FINANCIAL INFORMATION	39
FINANCIAL ASSISTANCE	40
CORE COURSE SCHEDULE	41
COURSE DESCRIPTIONS	42
PERSONNEL	44

www.millarcollege.ca/winnipeg

ACADEMIC CALENDAR

2023-2024

FALL SEMESTER 2023

Residence Students Arrive	Sept. 8
Registration	Sept. 9
Opening Sunday	Sept. 10
First Day of Classes	Sept. 11
Semester Break	Oct. 23 - 29
Modular Courses	Oct. 30 - Nov. 3
Final Exams	Dec. 18 - 20
Christmas Holidays	Dec. 21 - Jan. 6*

WINTER SEMESTER 2024

Arrive Back on Campus	Jan. 6*
Opening Sunday	Jan. 7
First Day of Classes	Jan. 8
Modular Courses	Jan. 8 - 12
MissionFest Engagement	Feb. 2 - 4
Semester Break	Feb. 17 - 25
Classes Resume	Feb. 26
Final Exams	TBD
Commencement	TBD

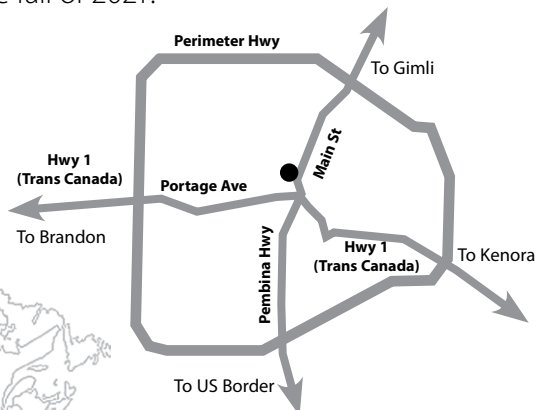
* Please note that this is a Saturday.

Do not make final travel plans without consulting the college first. These dates are subject to change.



WINNIPEG CAMPUS HISTORY

The story of Millar Winnipeg began to unfold when several pastors and ministry leaders in Winnipeg asked Millar to consider opening a campus in their urban setting. They sensed a growing hunger for Bible teaching and discipleship. The first college class of the Winnipeg Campus started in the fall of 2021.



Urban Edge

Students will gain hands-on ministry experience through Urban Edge. They will learn from local ministry leaders and develop a biblical understanding of urban ministry. Urban Edge will challenge students to use their gifts, passions, and abilities to serve God in all aspects of life.



NIGHT SCHOOL



In addition to the full college program, the Winnipeg Campus offers a Night School. The Night School exists to assist churches as they build faith foundations in their congregations by providing biblically-based, gospel-centered teaching.

The two-year Core Certificate in Biblical Studies program features six 2-credit-hour courses: Old Testament Overview, New Testament Overview, Introduction to Biblical Studies, Torah, Gospels, and Romans.

WINNIPEG

Winnipeg FINANCIAL INFORMATION

2023-2024

NEW STUDENT APPLICATION FEE (NON-REFUNDABLE) 50

COST OF TUITION, ROOM & BOARD (PAYMENT DUE UPON ARRIVAL EACH SEMESTER)

Student fees cover the majority of a student's cost to attend Millar, but a significant amount is graciously provided by donations from alumni and friends of the college. Students are normally expected to enroll in a full course load of 16 credits per semester.

There is a limited space available for students to live in the campus building. These rooms are available to rent on a monthly basis. For further information, please contact Jordan Watts at jordan@millarcollege.ca. All students, whether commuting or residence, are expected to stay for the noon meal Monday – Friday.

ALL STUDENTS

Tuition (per semester)	4,200
Tuition (per credit hour)	270
Noon Meal (per semester)	600
Tuition, Noon Meal (full year)	9,600
Textbooks (estimate, per semester)	400

OTHER FEES

Audit Rate (per credit hour)	135
Note: Spouses of full-time students may audit up to 5 credits per semester at no charge	
Exam Rescheduling Fee (per exam)	100
Rental Fees (approximate, per month)	600

CASH DISCOUNT

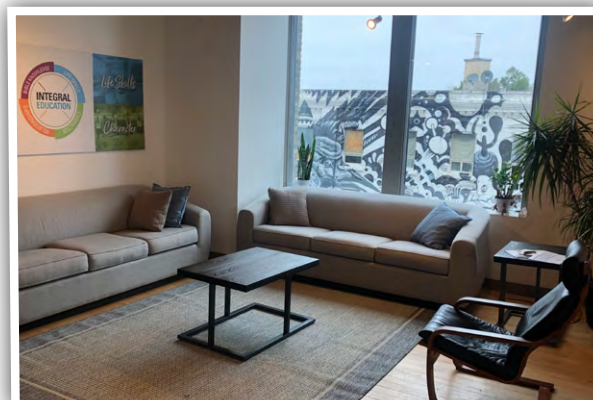
A \$50 discount on tuition will be given if fees are paid in full at registration by cheque, debit, e-transfer, or cash.

LATE PAYMENT OF FEES

All fees are due on registration day. Semester fees not paid in full by noon on the last business day of the opening month will be assessed a finance fee of \$25. Additionally, a monthly overdue charge of 1% of the unpaid balance will be assessed on the last business day of each month thereafter.

REFUND POLICY

Refunds are made at the discretion of the college. In most cases, any student who withdraws before the end of the semester will forfeit tuition for the semester and room and board fees for the month in which the student leaves campus. In cases where sickness is a factor and a student leaves for four weeks or more, the student may apply for a pro-rated refund.



Financial Assistance

CHRISTIAN WORKERS BURSARY

A bursary for 10% of tuition will be awarded to students whose parents are engaged in full-time Christian ministry (missionaries, pastors, evangelists, camp staff, and other parachurch organizations). To apply, complete the section on the application form.

HERBERT W. PEELER MEMORIAL BURSARY

Two annual entrance bursaries of \$1,000 are awarded to first-year students based on financial need. Students must apply before June 1 to be eligible. Application form available online at www.millarcollege.ca/apply.

KARSGAARD BURSARY

Eight entrance bursaries of \$1,000 are available annually to first-year students based on financial need. Students must apply before June 1 to be eligible. Application form available online at www.millarcollege.ca/apply.

RECRUITMENT BURSARY

A \$250 bursary (\$125 per semester for one academic year) will be awarded to each student who personally recruits a new freshman student. The applicant must indicate this student on his/her application form.

STUDENT AID FUND

As funds are available, students are selected for Student Aid according to financial need and good standing at Millar. Applications are available from the Student Life department.

WILLIAM WIGGINS MEMORIAL BURSARY

This \$400 bursary is presented to a Millar student who intends to pursue cooking as a ministry. Applicants must have applied to a culinary arts program in an accredited school and submit a written essay to the Wiggins family describing their interest in ministering through the culinary arts.

YOUTH & CHILDREN'S MINISTRY ACHIEVEMENT SCHOLARSHIPS

These scholarships are available to students who gain exceptional recognition in certain club or ministry programs. Scholarships require approval from both the ministry organization and Millar. Students must provide a letter or certificate from the ministry organization as evidence of the achievement.

The maximum award per student for any combination of these awards is \$1,000. Up to \$500 of the scholarship amount will be paid during the first semester of the freshman year and the balance during the second semester. Staff children who already receive staff family tuition scholarships are not eligible for these achievement scholarships.

The participating club and ministry programs include Word of Life, Awana, Pioneer Clubs, Club DJ, Child Evangelism Fellowship, Mailbox Club, ACE Academy, and Bible Quizzing.

Please contact finance@millarcollege.ca to request further details.

STUDENT LOANS AND GRANTS

Students who are applying for government student loans and grants are advised to apply as early as possible in order to avoid late charges on their account. Application forms are available online at www.canada.ca (click or search Student Aid). Please plan for financing of any costs that are not covered by the loan.

CORE COURSE SCHEDULE

FIRST YEAR

FALL SEMESTER

Course #	Course Title	Credit Hrs
B1000	Bible Overview	0
B1013	Torah/Hermeneutics I	3
B1033	Introduction to the Gospels	3
M1013	Communications	3
T1003	Theology I	3
	Minimum Electives	4
	Total	16

WINTER SEMESTER

Course #	Course Title	Credit Hrs
B1023	Torah/Hermeneutics II	3
B1143	Acts and Galatians	3
M1003	Essentials of Discipleship	3
T1013	Theology II	3
	Minimum Electives	4
	Total	16

SECOND YEAR

FALL SEMESTER

Course #	Course Title	Credit Hrs
B2023	Historical Books I	3
B2043	Jeremiah, Lamentations and Ezekiel	3
B2053	Romans	3
T2013	Church History I	3
	Minimum Electives	4
	Total	16

WINTER SEMESTER

Course #	Course Title	Credit Hrs
B2003	The Gospel and Letters of John	3
B2033	Isaiah	3
B2063	Corinthian Letters	3
T2053	Apologetics and Christian Ethics	3
	Minimum Electives	4
	Total	16

THIRD YEAR

FALL SEMESTER

Course #	Course Title	Credit Hrs
B3003	Daniel and Revelation	3
B3013	Prison and Pastoral Letters	3
B3053	Old Testament Poetry and Wisdom Lit.	3
T3013	Church History II	3
	Minimum Electives	4
	Total	16

WINTER SEMESTER

Course #	Course Title	Credit Hrs
B3023	Historical Books II	3
B3033	Minor Prophets	3
B3043	General Epistles	3
M3013	Ministry & Mission of the Local Church	3
	Minimum Electives	4
	Total	16

Core and elective courses are subject to change.

COURSE DESCRIPTIONS

Additional courses will be offered on a one-time basis during modular weeks based on the availability of adjunct instructors. Elective courses are marked with *.

BIBLE COURSES

B1000 Bible Overview

This course provides an introduction to the 66 books of the Bible with a focus on the major themes, basic content, and contribution of each book to the whole of Scripture.

B1013 Torah/Hermeneutics I

Genesis and Exodus are studied with an emphasis on their foundational role in understanding the themes and hermeneutics of the entire Scriptures and their application to daily life.

B1023 Torah/Hermeneutics II

Leviticus through Deuteronomy are studied with an emphasis on their foundational role in understanding the themes and hermeneutics of the entire Scriptures and their application to daily life.

B1033 Introduction to the Gospels

This course covers the synoptic Gospels (Matthew, Mark, and Luke) with an emphasis on their major events and themes. The historical account of Luke will be followed as the basis for studying the major events of Jesus Christ's life, death, and resurrection.

B1143 Acts and Galatians

Through an examination of the history and theology of both Acts and Galatians, this course focuses on the birth, development, and global impact of the Christian church under the ministry of the Holy Spirit.

B1154 Biblical Greek I: Grammar*

This course provides an introduction to New Testament Greek, with emphasis on reading and pronunciation. Every word used more than 30 times in the New Testament will be memorized.

B1164 Biblical Greek II: Grammar*

This course will solidify the student's understanding of Greek grammar and help establish confidence in reading the Greek New Testament. ⌘ Prerequisite: B1154 Biblical Greek I: Grammar.

B2003 The Gospel and Letters of John

The Gospel and Letters of John are explored with a focus on the deity of Christ and the signs and discourses that support that key theme, as well as instruction related to the Christian life.

B2023 Historical Books

This course deals with the history of Israel from the time of their entrance into the land through to their restoration from Babylonian Captivity. It will cover the books of Joshua through Esther.

B2033 Isaiah

The Book of Isaiah is studied considering its historical setting and theological importance, particularly that which relates to the first and second coming of Christ and the future of the nation of Israel.

B2043 Jeremiah, Lamentations and Ezekiel

The major themes in the books of Jeremiah, Lamentations, and Ezekiel are explored, focusing on the hope presented by these Old Testament prophets and the fulfillment of prophecy in the coming of the Messiah.

B2053 Romans or B2054 Romans (Greek)

The epistle to the Romans is studied in detail. The student is encouraged to master the teaching of justification and sanctification, the relation of this age to God's program for Israel, and the practical instruction for daily Christian living. B2054 Romans (Greek) will focus on sight-reading and interpreting Romans from the Greek New Testament. ⌘ Prerequisite: B1164 Biblical Greek II: Grammar.

B2063 Corinthian Letters or B2064 Corinthian Letters (Greek)

These letters of Paul are examined with an emphasis on the great doctrines of the faith and the practical issues of life in the body of Christ. B2064 Corinthian Letters (Greek) will focus on sight-reading and interpreting the Corinthian Letters from the Greek New Testament. ⌘ Prerequisite: B2054 Romans (Greek).

**B3003 Daniel and Revelation or
B3004 Daniel and Revelation (Greek)**

Detailed consideration is given to the books of Daniel and Revelation, emphasizing the major themes, divisions, methods of interpretation, and theological implications of these books. B3004 Daniel and Revelation (Greek) will focus on sight-reading and interpreting Revelation from the Greek New Testament. ⌘ Prerequisite: B2064 Corinthian Letters (Greek).

B3013 Prison and Pastoral Letters

A study of Ephesians, Philippians, Colossians, Philemon, 1 & 2 Timothy, and Titus is undertaken in light of each book's historical setting, theological foundations, and instruction in practical Christian living.

B3023 Historical Books II

This course examines the historical books of 1 Chronicles through Esther, with a focus on the captivity of the nation of Israel and Israel's return to the land.

B3033 Minor Prophets

Hosea through Malachi are studied with a focus on the historical setting, key theological themes, and spiritual message of each book.

**B3043 General Epistles or
B3044 General Epistles (Greek)**

Hebrews, James, 1 & 2 Peter, and Jude are studied in detail, examining their teachings and practical implications for believers. B3044 General Epistles (Greek) will focus on sight-reading and interpreting the General Epistles from the Greek New Testament. ⌘ Prerequisite: B3004 Daniel and Revelation (Greek).

B3053 Old Testament Poetry and Wisdom Literature

This course concerns itself with an analysis of the background, content, and theological considerations of the Old Testament books of Job through Song of Solomon.

THEOLOGY COURSES

T1003 Theology I

This course introduces the subject of theology and examines the biblical teaching of the authority, nature, inspiration, and canonicity of Scripture as well as a special focus on the highest point of revelation: the Gospel of Jesus Christ.

T1013 Theology II

Theology II deals with the doctrines of God (Theology Proper), Christ (Christology), and the Holy Spirit (Pneumatology). It will examine these doctrines from the perspective of systematic and historical theology.

T2013 Church History I - Early to Medieval Era

This course covers church history from the first century through the Medieval period and into the early beginnings of the Reformation period.

T2053 Apologetics and Christian Ethics

This course provides a biblical framework for approaching ethical issues in the 21st century as well as examining the truth claims of the gospel with the goal of responding to contemporary, secular questions of faith, truth, and absolutism.

T3013 Church History II - Reformation to the 21st Century

This course covers the Reformation period through the Enlightenment to the present day with a focus on significant leaders, philosophers, theologians, and theological ideas.

MINISTRY COURSES

M1003 Essentials of Discipleship

This course focuses on developing habits that mark the changed life of a follower of Jesus. It addresses topics such as the believer's prayer life, devotional life, confession, fitness, finances, entertainment, and vocation.

M1013 Communications

This course focuses on written and oral communication skills. Instruction and practice are provided, equipping the student to research and write a theology paper. A variety of oral communication skills are taught for the purpose of best representing Christ.

M1062 Introduction to Missions*

This course examines the common but critical issues facing missions and missionaries. These issues may include the affluence of the western church, short-term missions teams, and the challenges of contemporary cross-cultural evangelism.

M1102 Urban Church Planting*

This course focuses on the foundations of church planting while giving practical and methodological strategies for fruitful church planting endeavours in an urban setting.

M1152 Cross Cultural Ministry*

This course focuses on the necessity and responsibility Christians have to missions worldwide by exploring how to be effective in cross-cultural missions and experiencing ministry in a cross-cultural setting.

M1212 Chronological Bible Teaching*

This course presents the Ethnos Canada disciple-making framework to foster biblical transformation within any context in Canada and gives students a framework to share biblical truths wherever God calls.

M1222 Urban Edge I*

This course explores urban cultural dynamics through hands-on exposure and teaching from a variety of local ministry



leaders. Students will come to better understand diverse worldviews and how their own worldview needs to be informed and shaped by the gospel.

M1232 Urban Edge II*

An extension of Urban Edge I, this course gives students the opportunity to observe and engage in the inner workings of urban life and ministry.

M2822 Homiletics*

This course provides principles for and practice in the preparation, structuring, and delivery of expository sermons.

M3013 Ministry and Mission of the Local Church

This course prepares the student to understand and embrace the ministry and mission of the local church.

WORSHIP ARTS COURSES

F1002 Chapel Worship Team*

Students with musical or technical (sound and A/V) abilities are encouraged to lead in chapel worship. The chapel music coordinator will place students on teams and provide guidance, but the team will select and lead music in chapels.

F1152 Chapel Worship Team Leadership*

Students will gain experience as they lead a chapel worship team and will receive accountability, instruction, and reading assignments to support them in their leadership role.

Winnipeg PERSONNEL



NICK BETZING
Instructor

Millar College of the Bible, B.A. in Strategic Ministries, 2018; Millar College of the Bible, Master of Biblical Studies (in process); Pastoral Ministry, 2021-present; Millar staff since 2022.



DUSTIN BURLET
Instructor

Peace River Bible Institute, B.R.E., 2007; Providence Theological Seminary, M.Div (Biblical Languages), 2011; McMaster Divinity College, PhD (Old Testament), 2020; Circle Square Ranch, Volunteer, 2000-2010; Peace River Bible Institute, Faculty, 2011-2015; Millar staff since 2022.



PETER BUHLER
Executive Director Winnipeg

Millar College of the Bible, B.A. in Strategic Ministries, 2001; Crest Leadership, MCL, 2016; Pastoral Ministry, 2000-2002; Millar staff since 2004.



JORDAN WATTS
Dean of Men

Millar College of the Bible, B.A. in Biblical Studies, 2020; Millar staff since 2020.



MATT WOODMASS
Instructor

Millar College of the Bible, B.A. in Strategic Ministries, 2015; Dallas Theological Seminary, Graduate Studies, 2019; Southeastern Baptist Theological Seminary, M.A. in Biblical Languages (in process); Bible Camp Program Director, 2008-2011; Millar staff since 2021.



KRISTEN WOYKE
Dean of Women

Millar College of the Bible, Bachelor of Biblical Studies, 2020; Torchbearers Albania, 2015-2016; The Mustard Seed, 2018-2019; Millar staff since 2021.



NATHAN WOYKE
Director of Urban Edge/Public Relations

Millar College of the Bible, Bachelor of Biblical Studies, 2020; Torchbearers Albania, 2015-2016; Millar staff since 2021.

WELCOME TO MILLAR COLLEGE OF THE BIBLE

Graduate Program



D. KROEKER
DIRECTOR OF GRADUATE PROGRAM



If you are already serving in ministry, we invite you to consider being further equipped through our Master's Degree program. The part-time program, designed to fit a busy ministry life, includes academic studies, practical projects, and personal mentoring. Courses are held in January at the Sunnybrae Campus and in June at the Pambrun Campus.

GRADUATE PROGRAM HISTORY

The Graduate Program began with a common vision held by a number of pastors in the Lower Mainland of BC. Conversations began with Millar College of the Bible, and as the discussion progressed, it seemed appropriate for Millar to take the lead on this initiative. In 2019, this vision became a reality with the launch of the Graduate Program.

www.millarcollege.ca/graduate-program

MASTER OF BIBLICAL STUDIES



The Master of Biblical Studies degree further equips church and ministry leaders to handle the Word of truth in the context of practical ministry (2 Tim. 2:15, 3:16-17).



MASTER

This degree provides a unique combination of academic learning, ministry skill, and character development. It is a 60 credit hour program that includes nine core Bible/Theology courses and nine Ministry Skill courses offered in modular format. One week, with morning and afternoon courses, is offered in early January each year at the Sunnybrae Campus; two weeks, again with morning and afternoon courses, are offered in June each year at the Pambrun Campus. The student can complete the program in three years, spending three weeks each year on campus, though up to six years are allowed for completion.

In addition to the eighteen courses, the degree includes a three-year mentoring program focused on character and ministry development. Each student will also complete a final project combining their academic learning with a practical ministry project relevant to their current ministry.

REQUIREMENTS

Candidates for the Master of Biblical Studies must:

- have successfully completed an undergraduate degree that includes at least 30 credit hours in Bible and Theology or undergo a prior learning and ministry assessment.
- be currently involved in ministry leadership with at least three to five years of significant ministry experience (e.g. pastoring, missions, or para-church ministry).
- have life experience. While this level of experience will be evaluated on a case-by-case basis, we will not actively recruit the college student who is pursuing graduate studies immediately upon completion of an undergraduate degree.
- demonstrate a clear call to ministry leadership, have a clear understanding of why they are pursuing a master's degree, and acknowledge how it will impact their ability to provide ministry leadership.
- have clear endorsement from references including their pastor, ministry supervisor, and a friend.

THREE CAMPUSES IN WESTERN CANADA



To contact our Admissions Office, please:

Email: admissions@millarcollege.ca

Call Kelvin at: **306-582-2033**

MILLARCOLLEGE.CA